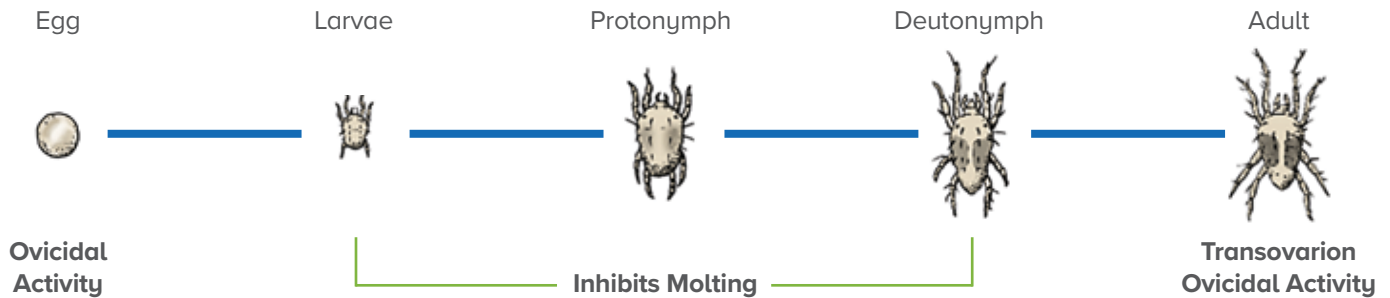


MITE GROWTH INHIBITOR

- **Stifle® WP Miticide** contains the active compound etoxazole (72%), a chitin synthesis inhibitor and mite growth regulator.
- Targets all mite life stages – from eggs to maturity.
- Sterilizes adult females and their eggs, kills eggs on foliage and nymphs by inhibiting molting.
- Insecticide Resistance Classification (IRAC): 10B (only miticide in this group).
- Effective against most of the common mite species such as various spider mites, Banks grass mite and European Red mite. See the label for a complete list of target pests.

Stifle WP can be used on the following crops/ crop groups: Avocado, corn (field, popcorn, seed), cotton, cucurbits, grape, mint, pepper and eggplant, pome fruit, strawberry, stone fruit, tree nuts and all other labeled crops.



Name	IRAC	Timing	Efficacy Against Mite Life Stages			
			Eggs	Larvae	Nymph	Adult
Stifle WP	10B	Early-Mid Season	++	+++	+++	++ Causes females to produce sterile eggs

PHI: 28 days on tree nuts (PHI Varies depending on crop).

REI: 12 hours

Use Recommendation:

- Use at 2–4 oz/A depending on crop.
- Apply only once per season, when mite populations are building up; 2 applications per season allowed on corn.
- Good coverage is required for best activity.
- Horticultural oil or non-ionic adjuvant in the tank mix may increase efficacy due to better coverage and enhanced translaminar movement of active compound.
- For resistance management, rotate with miticides from a different IRAC mode of action group.

See our entire line of products at AMVAC.com

Stifle WP Miticide
IRAC Group 10B