

ENVANCE

TECHNOLOGIES™



PROVERDE™

Technical Presentation

ProVerde™ Technical Presentation Presentation Outline

- **ProVerde™ Technology Overview**
- **ProVerde™ Broad Spectrum Insect Killer**
- **ProVerde™ Wasp & Hornet Killer**
- **ProVerde™ Dust Insecticide**

- ProVerde™ Products
 - Product Label
 - Active Ingredient Information
 - Precautionary Statements
 - Restrictions
 - Application Sites
 - Application Rate
 - Insects Targeted
 - Comparative Efficacy Data

ProVerde™ Technical Presentation Technology Overview

ENVANCE

TECHNOLOGIES™



PROVERDE™

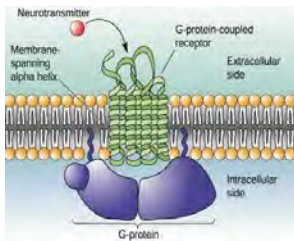
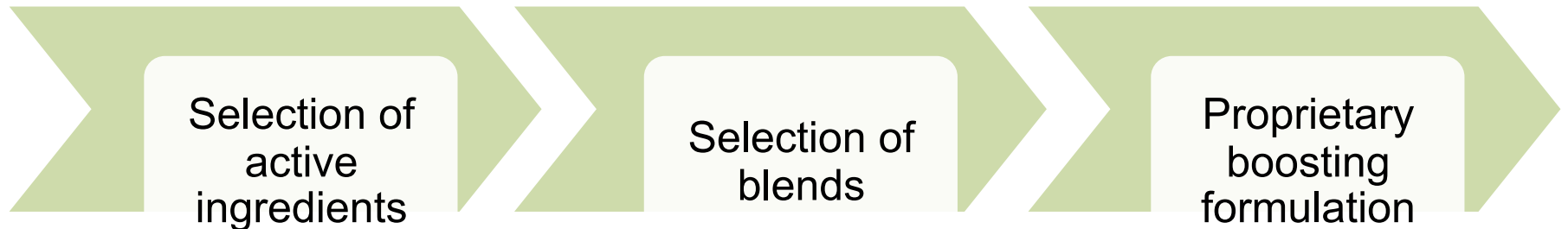
Technology Overview

ProVerde™ Technical Presentation
Breakthrough technology works in 3
steps with 3 levels of patent protection

Step 1

Step 2

Step 3



$$1+1 > 2$$

$$1+1+ \alpha > 10$$

$$1 + \alpha > 10$$



21 granted patents; 50 pending

ProVerde™ Technical Presentation

Key technology characteristics

- Active ingredients target tyramine receptors
- Effective against both susceptible and resistant strains
- Excellent control using low levels of active ingredient
- Rapid kill
- Broad Spectrum of Activity
 - Crawling insects
 - Flying insects



ProVerde™ Technical Presentation

Mode of action

→ Primary mode of action on tyramine receptors

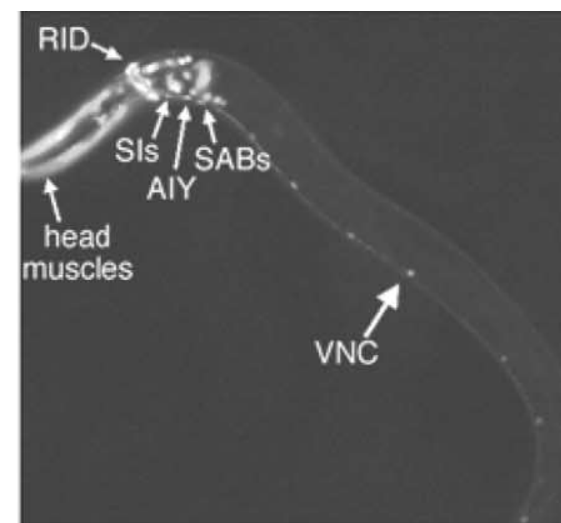
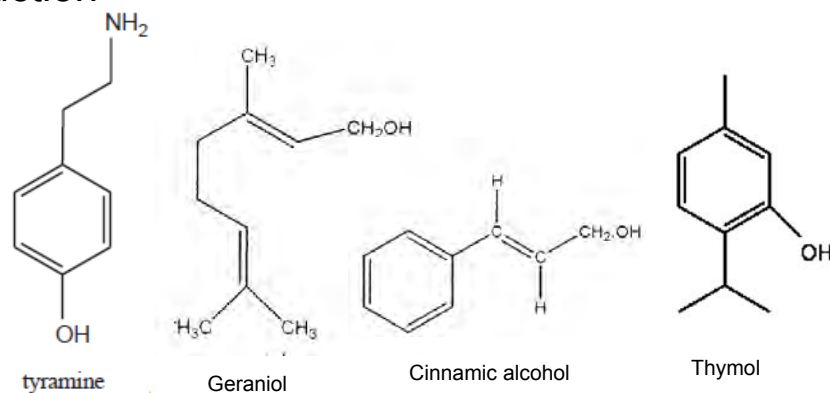
- Tyramine receptors are G-Protein-Coupled Receptors (GPCRs)

→ Tyramine

- One of two neuroactive biogenic amines primarily found in invertebrates

→ Function of tyramine in invertebrates is largely unknown but evidence exists for roles in:

- Neuromuscular physiology
- Locomotion
- Olfaction
- Reproduction

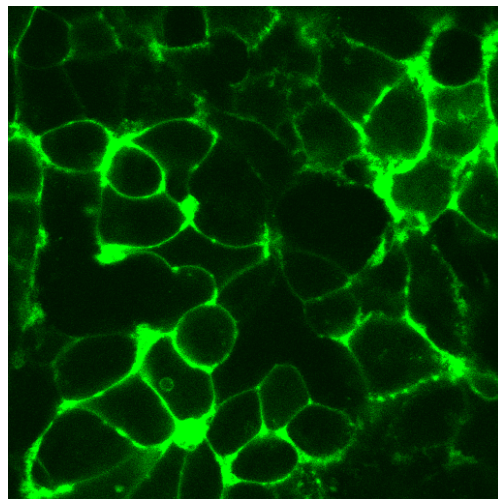


C. elegans with fluorescently labeled tyramine receptors showing expression in the head and ventral nerve cord

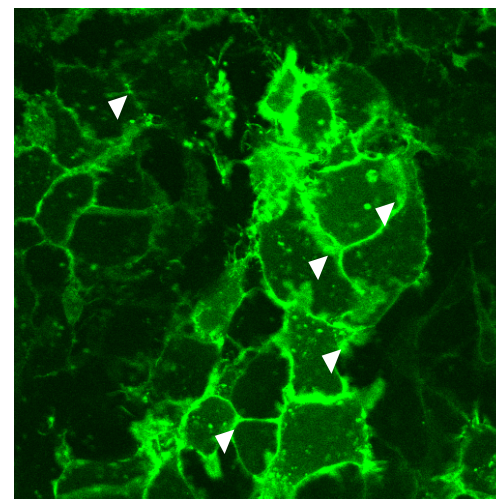
ProVerde™ Technical Presentation

Example: Tyramine receptor response to thymol

→ Most GPCRs internalize after prolonged stimulation



Buffer Control



Thymol

Arrows denote
internalized
receptors

- *C. elegans* cells expressing fluorescently labeled tyramine receptors
- Internalize after activation with thymol making them unavailable for tyramine binding
 - Disrupts normal physiological processes in the target insect resulting in its death

*Lei et al. 2010 Biochem Pharmacol 79

ProVerde™ Technical Presentation

ProVerde™ Products



ProVerde™ Technical Presentation

ProVerde™ Broad Spectrum Insect Killer



ProVerde™ Technical Presentation

ProVerde™ Broad Spectrum Insect Killer

Product Label

ANTS • ROACHES • FLIES

ProVerde™

Broad Spectrum Insect Killer

Kills on contact!

**Safe for kitchens, schools,
hospitals and other
sensitive areas**

**Safe for use around
children & pets**

BREAKTHROUGH TECHNOLOGY

<p>CAUTION KEEP OUT OF REACH OF CHILDREN</p> <p>See back panel for additional precautionary statements.</p>	<p>PRECAUCIÓN MANTÉNGA FUERA DEL ALCANCE DE LOS NIÑOS</p> <p>Ver la etiqueta en el dorso para avisos de precaución adicionales.</p>	<p>ACTIVE INGREDIENTS: Chloranil (106-24-1) 1.3% Cimoxanil (8016-91-6) 0.2% Other Ingredients* 98.5% Total 100.0%</p> <p>*White mineral oil, 2-propanol, vanillin, triethyl citrate, isopropyl myristate, lactic acid N-butyl ester, carbon dioxide</p> <p style="text-align: right;">NET WEIGHT 14 oz (397 g)</p>
--	--	---

PROVERDE™

WHERE TO USE
Use as a contact aerosol insecticide to kill pests in and around apartments, assisted living facilities, campgrounds, commercial buildings, day-care centers, factories, homes, horse barns, hospitals, hotels, motels, nursing homes, office buildings, warehouses, resorts, schools, studios, stores, supermarkets, restaurants, libraries, food processing facilities, transportation equipment (airports, automobiles, buses, trucks, trailers, boats, ships and trains), warehouses, zoos, and other residential, commercial and institutional establishments.

PRECAUTIONARY STATEMENTS
With direct contact, may cause moderate eye irritation. Avoid contact with eyes and skin. Wash thoroughly with soap and water after handling. **FLAMMABLE:** Keep away from heat, sparks, grills, and open flames. Do not apply on or around electrical wiring (do not plug directly into electronic equipment such as radios, TVs, computers, etc.). Contains under pressure. Do not puncture or incinerate container. Exposure to temperatures above 130° F may cause container to burst. Do not apply directly to plants.

FINISHED SURFACES: May stain some finished surfaces. Test in an inconspicuous area before applying to finished surfaces. To prevent staining, wipe away excess with a damp cloth and wash fabrics according to their care instructions.

HARD FLOOR SURFACES: May make hard floor surfaces slippery. Wipe away excess with damp cloth to avoid possible injury.

FIRST AID
If in eyes: If in eyes, hold eye open and flush slowly and gently with water for 15-20 minutes. Remove contact lenses, if present. After the first 5 minutes, then continue rinsing. If on Skin: Wash thoroughly with soap and water. If inhaled: Move affected person(s) to fresh air. If ingested: Raise mouth out with water and contact a doctor for treatment advice. If irritation develops, contact a doctor or poison control center for treatment advice. Have the product label or container with you when calling a doctor or going for treatment.

DIRECTIONS FOR USE
Most effective results are achieved when used as part of a treatment protocol that includes physical, environmental and other chemical pest control measures.

Read entire label prior to use and use product as directed. Hold product upright with nozzle directed away from face. For best results, spray insect thoroughly with use. Product may be used to treat insects on counter tops, sinks, floors, food preparation areas, in cabinets, around appliances and any other areas where insects are or may be present. After use, thoroughly clean up food contact surfaces.

APPLY TO THE FOLLOWING PESTS
Crawling Insects: Cockroaches, ants, crickets, beetles, sawflies, stink bugs, spiders, fleas, ticks, and other crawling insects.
Flying Insects: Flies, gnats, mosquitoes, moths, and other flying insects.

FOR FLYING INSECT TREATMENT: Apply towards target pests. Ensure contact with as many insects as possible. Repeat as necessary.

FOR CRACK & CREVICE TREATMENTS: Important! Use the injection tube provided. For crawling insects, inject into all cracks & crevices and spaces where insects may be present. Apply approximately 1 second of product per crack & crevice application and from 2 to 5 seconds of product per cubic foot of closed space treated. Apply more liberally for heavy infestations. Application can be made, but are not limited to, baseboards, cabinets, walls, ceilings, floor and window frames, and around water pipes and appliances. Ensure contact with as many insects as possible. Repeat as necessary.

STORAGE AND DISPOSAL
Any unused product must be disposed of on site or at an approved waste disposal facility.

STORAGE: Do not puncture or incinerate container. Store at room temperature away from heat, sparks or open flame. Do not expose to heat or direct sunlight above 130° F.

DISPOSAL: Do not reuse or refill this container. When container is empty, recycle if available or dispose of in trash.

FOR CHEMICAL SPILL, LEAK, FIRE OR EXPOSURE CALL CHEMTREC: 1-800-424-9300

FOR MEDICAL EMERGENCIES ONLY CALL: 1-866-257-4118

© 2015 Envance Technologies, LLC

Envance Technologies and ProVerde are trademarks of Envance Technologies, LLC and are used under license.

This product has been registered by the United States Environmental Protection Agency. Envance Technologies, LLC represents that this product qualifies for exemption under the Federal Insecticide, Fungicide, and Rodenticide Act.

Envance Technologies y ProVerde son marcas registradas de Envance Technologies, LLC y se usan bajo licencia.

Este producto no ha sido registrado por la Agencia de Protección Ambiental de los Estados Unidos. Envance Technologies, LLC representa que este producto califica para exención bajo la Ley Federal de Insecticidas, Fungicidas y Rodenticidas.





30% RECYCLED STEEL

DÓNDE USARLO
Use como insecticida de contacto para matar plagas en y alrededor de apartamentos, instituciones de atención geriátrica, campamentos, edificios comerciales, centros de guardería, bibliotecas, hogares, cuartos de caballos, hospitales, hoteles, moteles, hogares de ancianos, edificios de oficinas, estudios, almacenes, supermercados, restaurantes, librerías, instalaciones de procesamiento de alimentos, equipos de transporte (aviones, automóviles, autobuses, camiones, remolcadores, barcos, barcos y trenes), parques zoológicos y otros edificios comerciales e institucionales.

AVISOS DE PRECAUCIÓN
Con el contacto directo, puede causar irritación moderada en los ojos. Evitar el contacto con ojos y la piel. Después del manejo del producto: LAVARSE. Mantenga alejado de calor, cigarrillos, parrillas y flamas abiertas. No aplique en o cerca de alambres eléctricos (no aplique directamente a los aparatos electrónicos tales como las radios, los televisores, las computadoras, etc.). Contiene bajo presión. No perforar ni incinerar el envase. La exposición a temperaturas sobre 130° F puede causar que el envase se estalle. No aplique directamente a las plantas.

SUPERFICIES ACABADAS: Puede manchar algunas superficies acabadas. Haga una prueba en un área discreta antes de aplicar el producto a superficies acabadas. Para evitar las manchas, limpie el exceso con un paño húmedo y lave las áreas según sus instrucciones de cuidado.

SUPERFICIES DURA DE PISO: Puede causar que las superficies duras de piso estén resbalosas. Limpie el exceso con un paño húmedo para evitar posibles lesiones.

PRIMEROS AUXILIOS
Contenido con los ojos: Mantenga los ojos abiertos y enjuague con agua lentamente y con cuidado por 15 a 20 minutos. Si tiene lentes de contacto puestos, quíleslos después de los primeros 5 minutos; luego, continúe enjuagándose los ojos. Contestado con la piel: Lave a fondo con jabón y agua. Si se inhalara: Mueva a lugar permeable al aire libre. Si se ingiere: Coloque la boca con agua y comuníquese con un médico para consejos de tratamiento. Si se presenta una irritación continuada con un médico o un centro de control de emergencias para consejos de tratamiento. Laga la etiqueta o el envase del producto a la mano al llamar al médico o al buscar tratamiento.

INSTRUCCIONES DE USO
Los resultados más efectivos se logran cuando este producto se utiliza como parte de un protocolo de tratamiento que incluye medidas de control de plagas físicas, ambientales y químicas.

Lea la etiqueta entera antes de usar y use el producto según las instrucciones. Mantenga el producto vertical con la boquilla apuntada lejos de su cara. Para los mejores resultados, rocíe el insecto hasta mojarlo por completo. Este producto se puede usar para matar insectos en mostradores, estanterías, armarios, platos, frentes de preparación de alimentos, gabinetes, alrededor de enseres y en cualquier otra área donde pueda haber presencia de insectos. Después del uso, lave a fondo las superficies que están en contacto con los alimentos.

PARA APLICACIÓN A LAS SIGUIENTES PLAGAS
Insectos Crawlantes: Caracoles, hormigas, grillos, escarabajos, garrapatas, chinches hebreas, arañas, pulgas, garrapatas y otros insectos rasteadores.
Insectos Voladores: Moscos, jirafas, mosquitos, polillas y otros insectos voladores.

PARA TRATAMIENTO DE INSECTOS EN CRACKS Y CAVIDADES: Importante! Use la boquilla apuntada hacia los insectos en la grieta. Asígnele la mayor cantidad de insectos que sea posible. Repita según sea necesario.

PARA TRATAMIENTO DE CRACKS Y HUECOS: Importante! Use la boquilla de inyección provista. Para insectos rasteadores, inyecte el producto dentro de todos los agujeros, grietas y huecos donde pueda haber presencia de insectos. Aplique aproximadamente 1 segundo de producto por grieta o hueco y entre 2 y 5 segundos de producto por espacio de aire entre mostradores, estanterías, armarios, platos, frentes de preparación de alimentos que se aplican, pero no, frentes, estantes, gabinetes, muebles, frentes de puerta de ventanas, y alrededor de tuberías de agua y enseres. Asegúrese de hacer contacto con la mayor cantidad de insectos que sea posible. Repita según sea necesario.

ALMACENAMIENTO Y DEBECHE
Cualquier producto no usado deberá ser desechado en el sitio o en un vertedero de desechos aprobado.

ALMACENAMIENTO: No perforar ni incinerar el envase. Almacene a temperatura ambiente. Haga de fondo de calor, cigarrillos o flamas abiertas. No exponga al calor ni ultravioleta o temperaturas mayores a 130° F.

DEBECHE: No vertirlo al drenaje de aguas residuales. No cuando el envase está vacío, recíbelo, si es posible, o deséchelo en la basura.

PARA DERRAMES, FUGAS, INGENIEROS O EXPOSICIÓN A QUÍMICOS, LLAME AL: CHEMTREC: 1-800-424-9300

PARA URGENCIAS MÉDICAS SOLAMENTE, LLAME AL: 1-866-257-4118



FPO

890807002341

Manufactured by Envance Technologies, LLC
5151 McCrometer Parkway
Suite 275, Morrisville, NC 27560
1 (855) 217-5247
www.envancetech.com

ENVANCE
TECHNOLOGIES, LLC

PATENTS:
www.envancetech.com/legal

DOT 2Q M5749 DSC
L8172 - v010115



ProVerde™ Technical Presentation
ProVerde™ Broad Spectrum Insect Killer
Active Ingredient Information

ACTIVE INGREDIENTS:

Geraniol [106-24-1].....	1.3%
Cinnamon Oil [8015-91-6]	0.2%
Other Ingredients*	98.5%
Total	100.0%

*White mineral oil, 2-propanol, vanillin, triethyl citrate, isopropyl myristate, lactic acid N-butyl ester, carbon dioxide



ProVerde™ Technical Presentation

ProVerde™ Broad Spectrum Insect Killer

Precautionary Statements

PRECAUTIONARY STATEMENTS

With direct contact, may cause moderate eye irritation. Avoid contact with eyes and skin. Wash hands thoroughly with soap and water after handling. **FLAMMABLE**. Keep away from heat, sparks, grills, and open flames. Do not apply on or around electrical wiring (do not spray directly into electronic equipment such as radios, TVs computers, etc.). Contents under pressure. Do not puncture or incinerate container. Exposure to temperatures above 130° F may cause container to burst. Do not apply directly to plants.

FINISHED SURFACES: May stain some finished surfaces. Test in an inconspicuous area before applying to finished surfaces. To prevent staining, wipe away excess with a damp cloth and wash fabrics according to their care instructions.

HARD FLOOR SURFACES: May make hard floor surfaces slippery. Wipe away excess with damp cloth to avoid possible injury.



ProVerde™ Technical Presentation

ProVerde™ Broad Spectrum Insect Killer

Restrictions

- Keep away from heat, sparks, grills, and open flames.
- Do not apply on or around electrical wiring (do not spray directly into electronic equipment such as radios, TVs, computers, etc.).
- Do not apply directly to plants.
- After use, thoroughly clean up food contact surfaces.



ProVerde™ Technical Presentation

ProVerde™ Broad Spectrum Insect Killer

Application Sites

WHERE TO USE

Use as a contact aerosol insecticide to kill pests in and around apartments, assisted living facilities, campgrounds, commercial buildings, day-care centers, factories, homes, horse barns, hospitals, hotels, motels, nursing homes, office buildings, warehouses, resorts, schools, stables, stores, supermarkets, restaurants, bakeries, food processing facilities, transportation equipment (airplanes, automobiles, buses, trucks, trailers, boats, ships and trains), warehouses, zoos, and other residential, commercial and institutional establishments.

- **Contact Kill:** Product may be used to treat insects on counter tops, sinks, floors, food preparation areas, in cabinets, around appliances, and any other areas where insects are or may be present.
 - After use, thoroughly clean up food contact surfaces.
- **Crack & Crevice Treatments:** Applications can be made, but are not limited to, baseboards, cabinets, walls, ceilings, door and window frames, and around water pipes and appliances.



ProVerde™ Technical Presentation

ProVerde™ Broad Spectrum Insect Killer

Application Rate

- **Crawling & Flying Insects:** For best results, spray insect(s) thoroughly until wet. Ensure contact with as many insects as possible. Repeat as necessary.

- **Crack & Crevice Treatments:** Using the injection tube provided, apply approximately:
 - 1 second of product per crack & crevice application
 - From 2 to 3 seconds of product per cubic foot of closed space treated.
 - Apply more liberally for heavy infestations.



ProVerde™ Technical Presentation

ProVerde™ Broad Spectrum Insect Killer

Insects Targeted

APPLY TO THE FOLLOWING PESTS

Crawling Insects: Cockroaches, ants, crickets, beetles, earwigs, stink bugs, spiders, fleas, ticks, and other crawling insects.

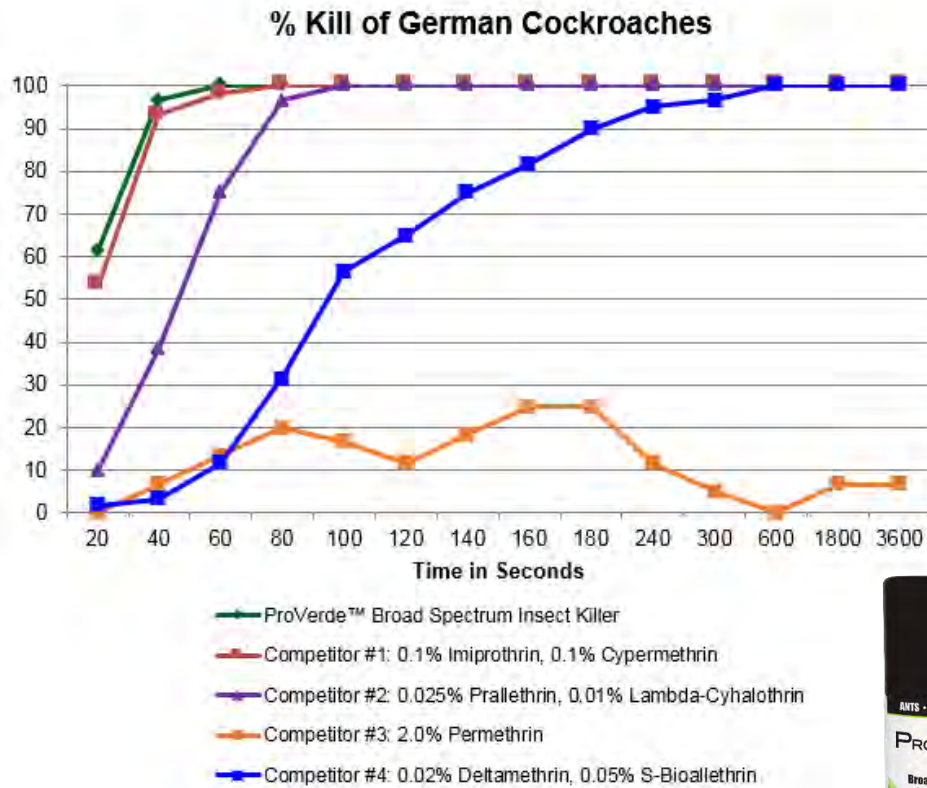
Flying Insects: Flies, gnats, mosquitoes, moths, and other flying insects.



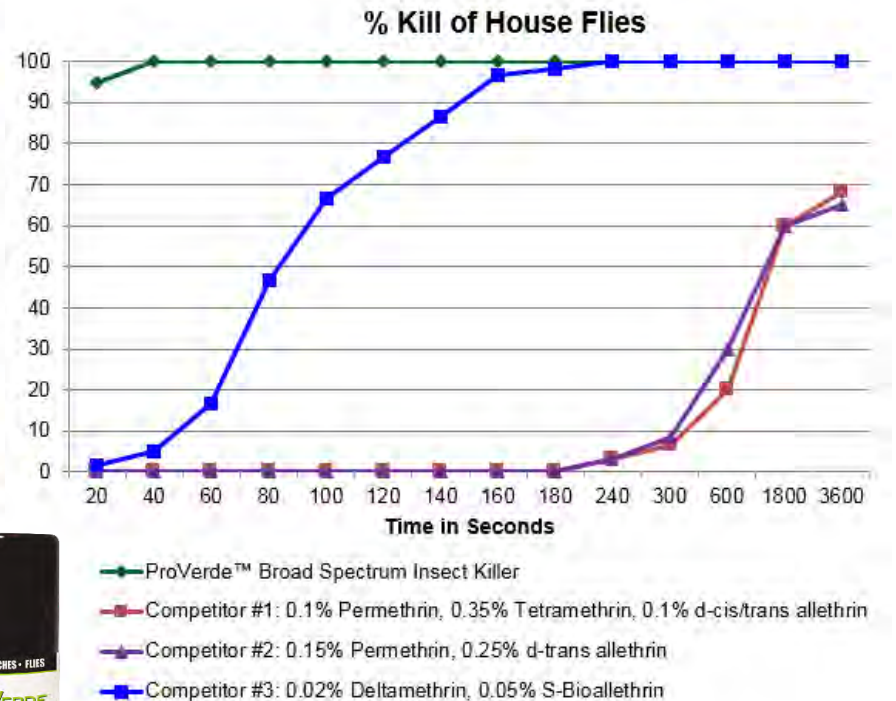
ProVerde™ Technical Presentation

ProVerde™ Broad Spectrum Insect Killer

Comparative Efficacy Data – Crawling & Flying Insects



German Cockroach Direct Spray Bioassay
Aerosol Spray – 10 insects/assay unit – 6 reps

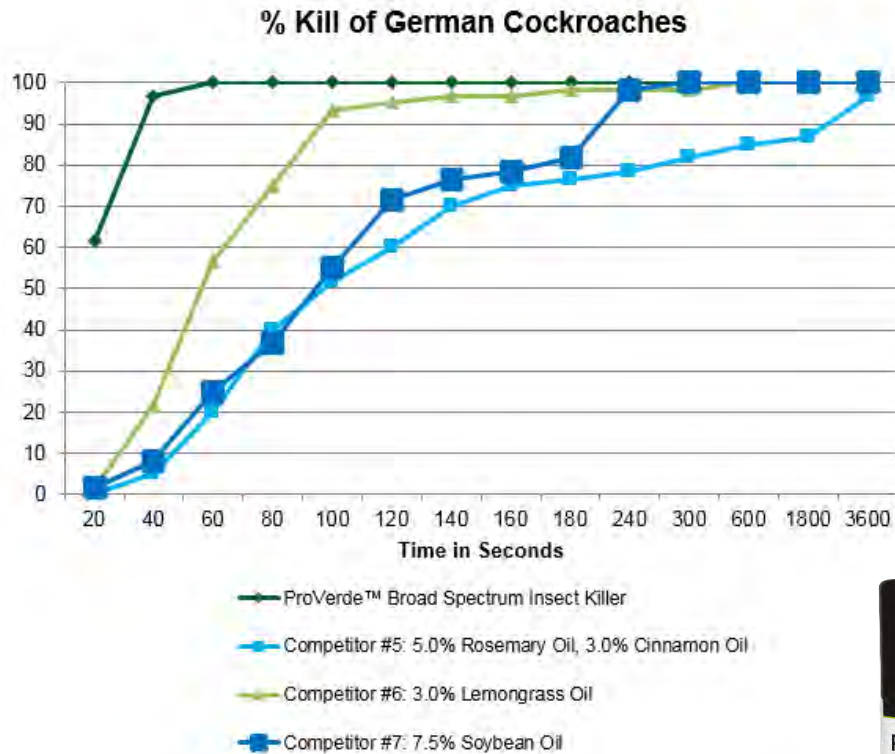


House Fly Direct Spray Bioassay
Aerosol Spray – 10 insects/assay unit – 6 reps

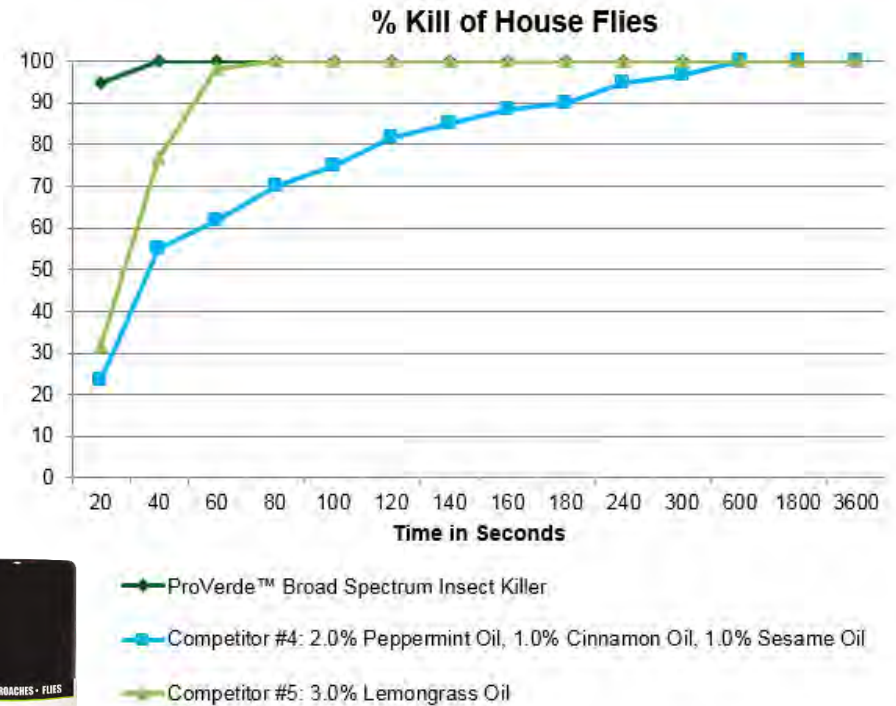
ProVerde™ Technical Presentation

ProVerde™ Broad Spectrum Insect Killer

Comparative Efficacy Data – Crawling & Flying Insects



German Cockroach Direct Spray Bioassay
Aerosol Spray – 10 insects/assay unit – 6 reps



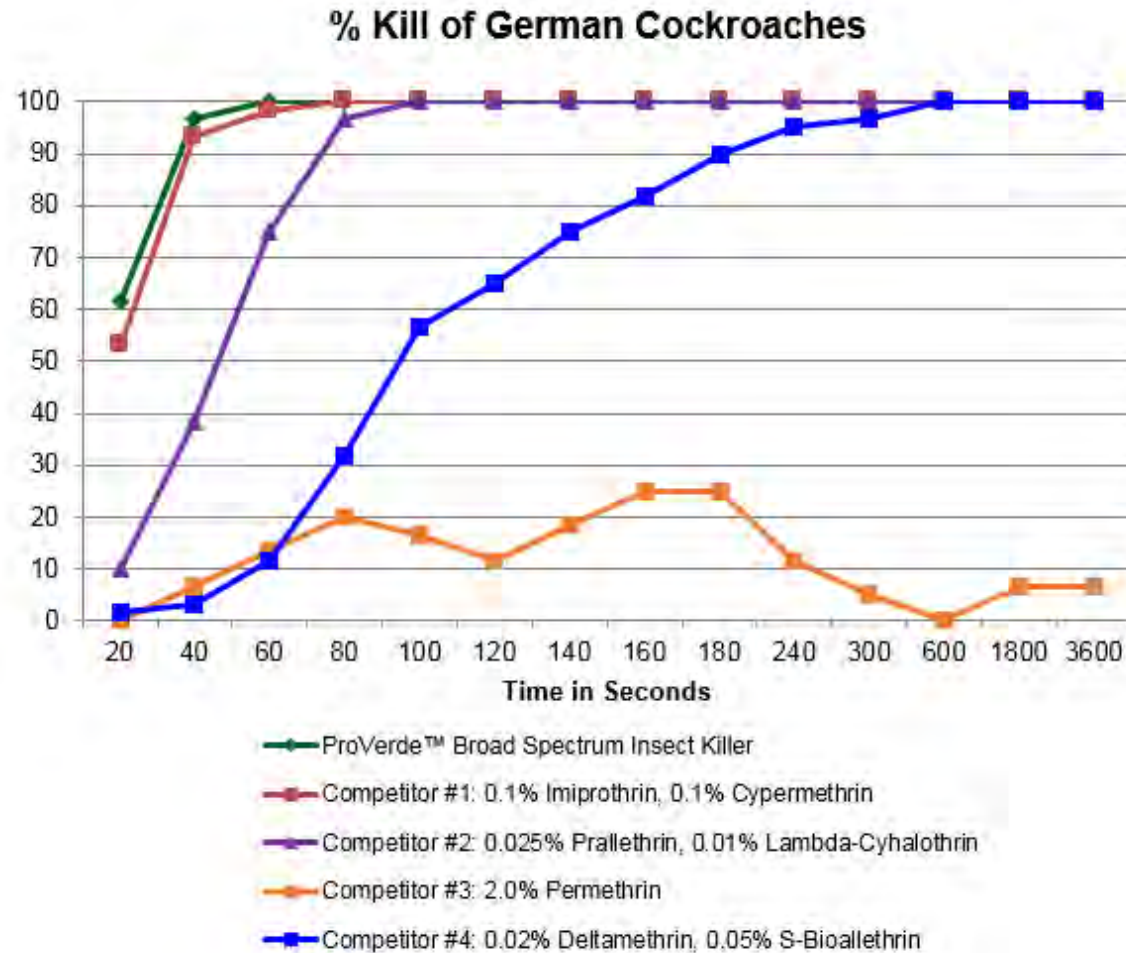
House Fly Direct Spray Bioassay
Aerosol Spray – 10 insects/assay unit – 6 reps



ProVerde™ Technical Presentation

ProVerde™ Broad Spectrum Insect Killer

Comparative Efficacy Data – Crawling Insects



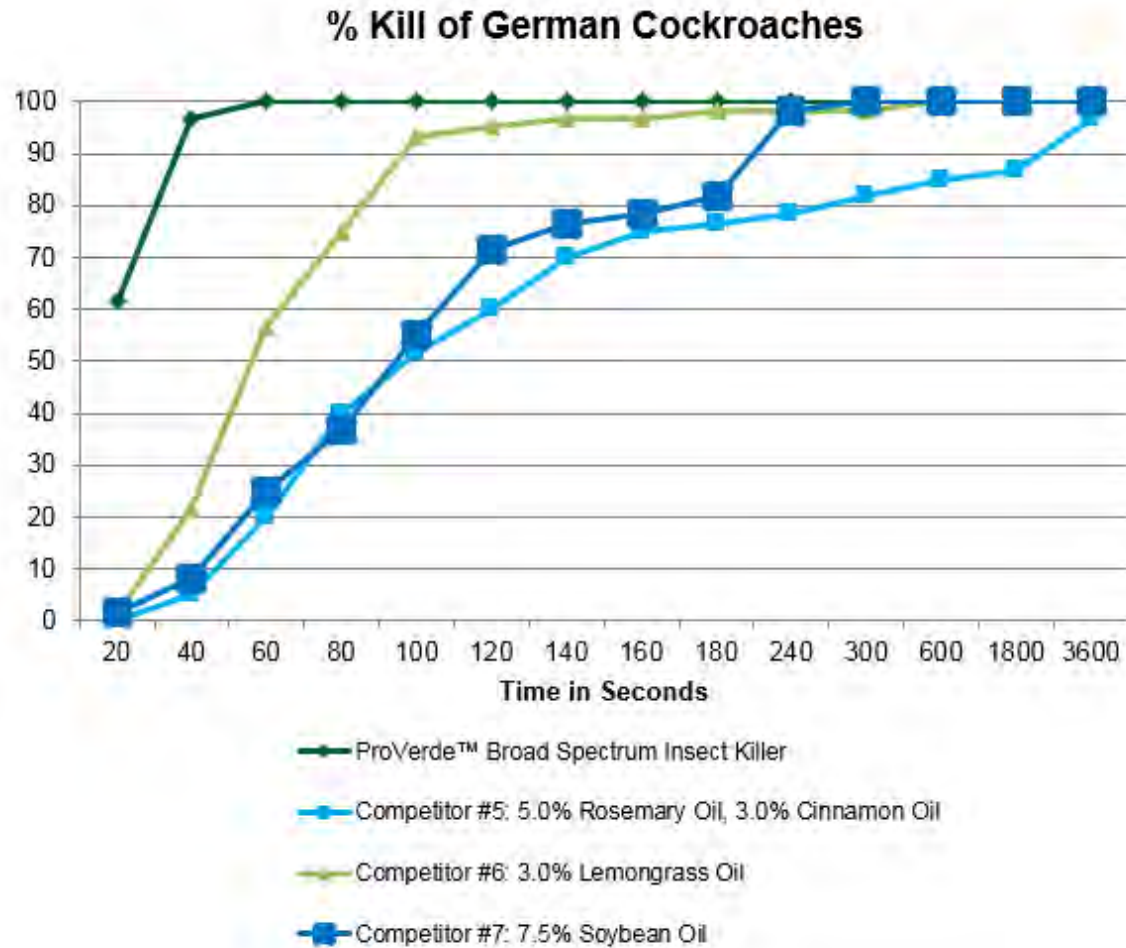
German Cockroach Direct Spray Bioassay
Aerosol Spray – 10 insects/assay unit – 6 reps



ProVerde™ Technical Presentation

ProVerde™ Broad Spectrum Insect Killer

Comparative Efficacy Data – Crawling Insects



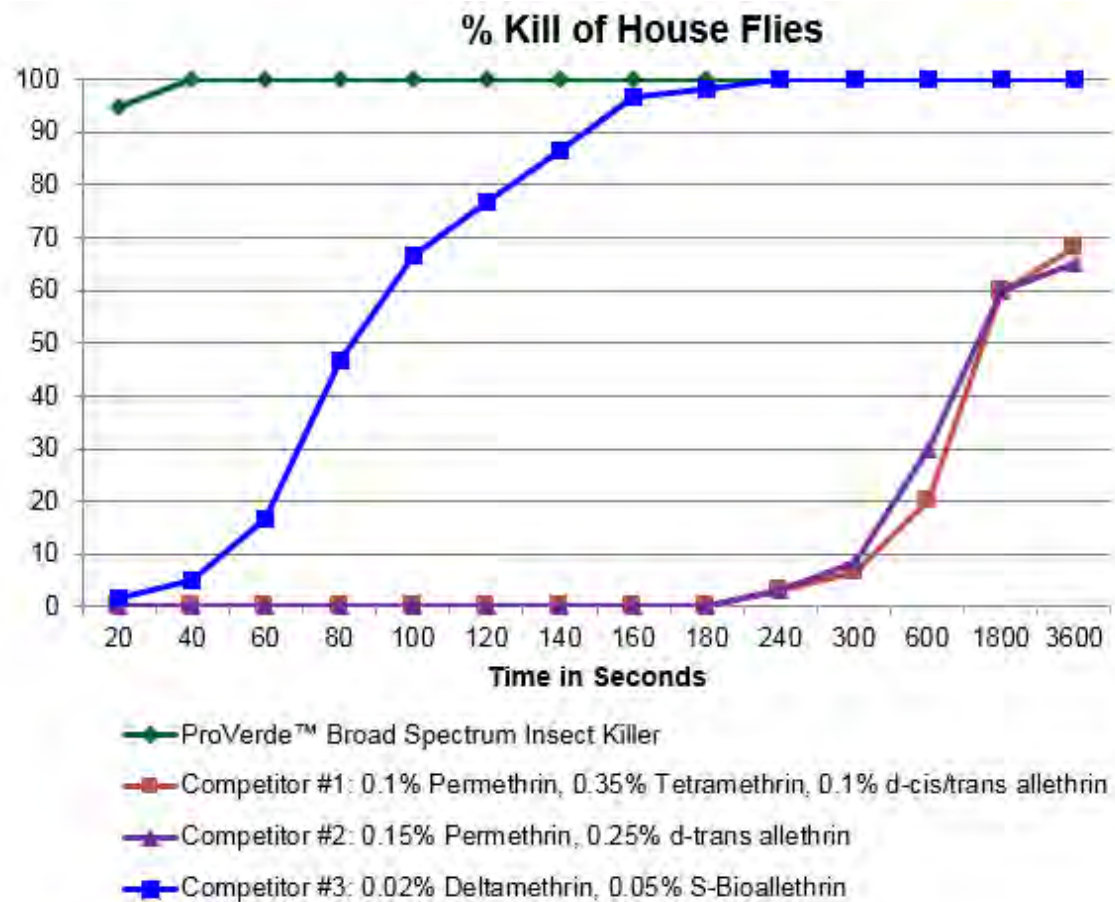
German Cockroach Direct Spray Bioassay
Aerosol Spray – 10 insects/assay unit – 6 reps



ProVerde™ Technical Presentation

ProVerde™ Broad Spectrum Insect Killer

Comparative Efficacy Data – Flying Insects



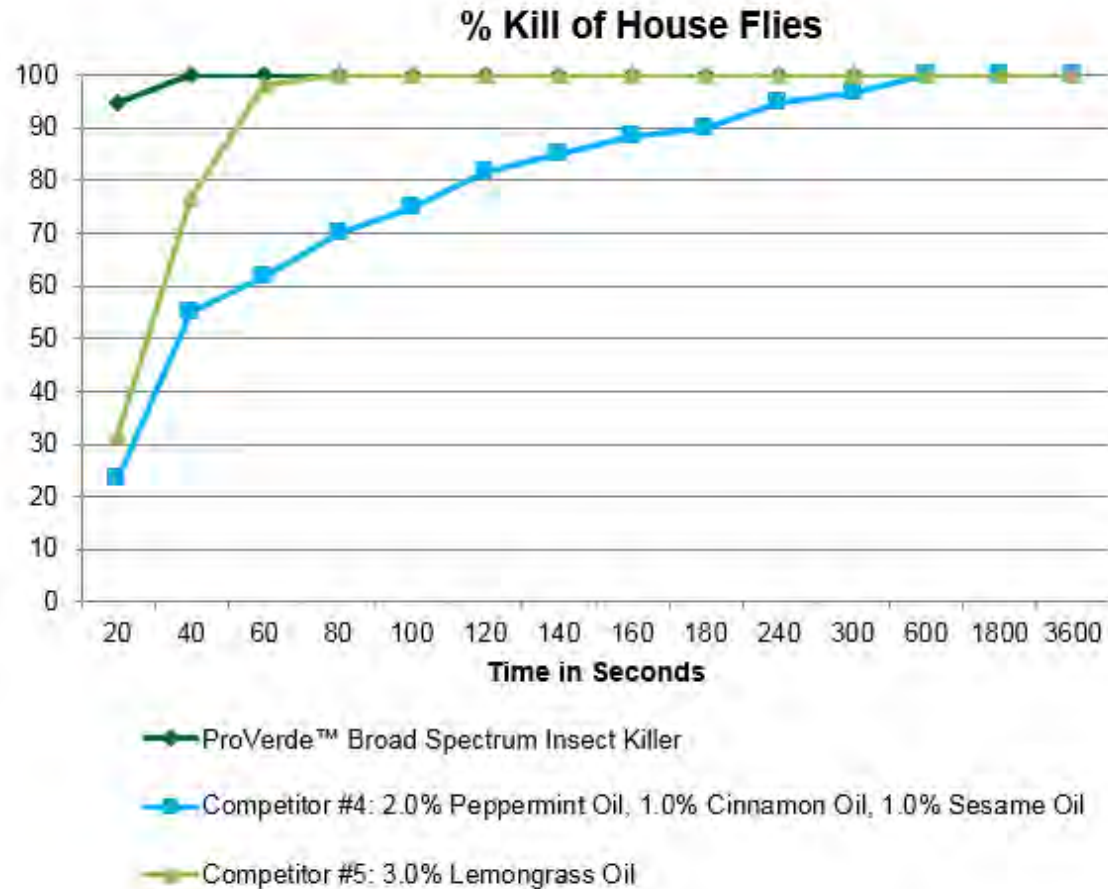
House Fly Direct Spray Bioassay
Aerosol Spray – 10 insects/assay unit – 6 reps



ProVerde™ Technical Presentation

ProVerde™ Broad Spectrum Insect Killer

Comparative Efficacy Data – Flying Insects



House Fly Direct Spray Bioassay
Aerosol Spray – 10 insects/assay unit – 6 reps



ProVerde™ Technical Presentation

ProVerde™ Wasp & Hornet Killer



ProVerde™ Technical Presentation

ProVerde™ Wasp & Hornet Killer

Product Label

WASPS • HORNETS • YELLOW JACKETS

PROVERDE™

**Wasp & Hornet
Killer**

Kills on contact!

Destroys nests!

Sprays up to 15'

**Safe for use on utility &
telecom equipment**

BREAKTHROUGH TECHNOLOGY

**CAUTION
KEEP OUT OF
REACH OF
CHILDREN**

See back panel
for additional
precautionary
statements.

**PRECAUCIÓN
MANTENGA
FUERA DEL
ALCANCE DE
LOS NIÑOS**

Ver la etiqueta en
el dorso para para
aviso de
precaución
adicional.

ACTIVE INGREDIENTS:
Geraniol (108-24-1).....0.89%
Other Ingredients**.....99.11%
Total.....100.00%

**White mineral oil, 2-propanol, vanillin,
brenthyl acetate, isopropyl myristate,
carbon dioxide

NET WEIGHT 14 oz (397 g)

APPLY TO THE FOLLOWING PESTS
Wasps, hornets, yellowjackets and bees.

WHERE TO USE
Use as a contact spray for killing stinging insect nests in common residential, commercial and institutional areas such as decks and patios, playgrounds, housing complexes, docks, outdoor refuse areas, storage facilities, attics, garages, and other indoor and outdoor environments.

DIRECTIONS FOR USE
Read entire label prior to use and use product as directed. It is recommended that applications for purposes of killing stinging insect nests be made after dark as the colony members will be less active. Care and proper procedures should be taken to mitigate the hazard of application to stinging insects and their nests when attempted during daylight hours. Applicators should consider the use of protective bee veils and suits.

NEST: For optimal results, application should be made during dawn or dusk when insect activity is low and colony members are present within the nest. Stand a safe distance away from the nest and take a position up wind of the nest site. This product produces a stream that reaches up to 15 feet. Do not stand directly underneath the nest. Aim product at nest by holding container upright with nozzle directed away from face with the prevailing wind at your back. Press nozzle down and apply product until the nest is thoroughly saturated to ensure the entire population is terminated. A follow up inspection is recommended 24 hours later to ensure that the nest has been completely killed. Wait until no further activity is observed prior to attempting to remove the nest.

STINGING PESTS: Hold product upright with nozzle directed away from face. For best results, spray insect thoroughly until wet.

PRECAUTIONARY STATEMENTS
With direct contact, may cause moderate eye irritation. Wash hands thoroughly with soap and water after handling. Avoid contact with eyes and skin. **FLAMMABLE** Keep away from heat, sparks, grills, and open flames. Contain under pressure. Do not puncture or incinerate container. Exposure to temperatures above 130° F may cause container to burst. Do not apply directly to plants. Treated surfaces may be slippery when wet. Clean up excess material. This product may stain porous or unsealed surfaces. Prior to use, spray a small inconspicuous area to determine if staining will occur.

FIRST AID
It in Eyes: If in eyes, hold eye open and rinse slowly and gently with water for 15-20 minutes. Remove contact lenses, if present, after the first 5 minutes, then continue rinsing. **On Skin:** Wash thoroughly with soap and water. If irritated: Move affected person(s) to fresh air. If ingested: Rinse mouth out with water and contact a doctor for treatment advice. If irritation develops, contact a doctor or poison control center for treatment advice. Have the product label or container with you when calling a doctor or going for treatment.

STORAGE AND DISPOSAL
Any unused product must be disposed of on site or at an approved waste disposal facility.

STORAGE: Do not puncture or incinerate container. Store at room temperature away from heat, sparks or open flame. Do not expose to heat or store at temperatures above 130° F.

DISPOSAL: Do not reuse or refill this container. When container is empty, recycle if available or dispose of in trash.

FOR CHEMICAL SPILL, LEAK, FIRE OR EXPOSURE CALL: CHEMTREC 1-800-424-9300

FOR MEDICAL EMERGENCIES ONLY CALL: 1-866-257-4118

*Dielectric Breakdown Voltage of 33,730 Volts

© 2015 Envance Technologies, LLC
Envance Technologies and ProVerde are trademarks of Envance Technologies, LLC and are used under license.

This product has not been registered by the United States Environmental Protection Agency. Envance Technologies, LLC represents that this product qualifies for exemption under the Federal Insecticide, Fungicide, and Rodenticide Act.

Envance Technologies y ProVerde son marcas registradas de Envance Technologies, LLC y se usan bajo licencia.

Este producto no ha sido registrado por la Agencia de Protección Ambiental de los Estados Unidos. Envance Technologies, LLC representa que este producto califica para exención bajo la Ley Federal de Insecticidas, Fungicidas y Rodenticidas.

Envance Technologies y ProVerde son marcas registradas de Envance Technologies, LLC y se usan bajo licencia.

Este producto no ha sido registrado por la Agencia de Protección Ambiental de los Estados Unidos. Envance Technologies, LLC representa que este producto califica para exención bajo la Ley Federal de Insecticidas, Fungicidas y Rodenticidas.

Envance Technologies y ProVerde son marcas registradas de Envance Technologies, LLC y se usan bajo licencia.

Envance Technologies y ProVerde son marcas registradas de Envance Technologies, LLC y se usan bajo licencia.

Envance Technologies y ProVerde son marcas registradas de Envance Technologies, LLC y se usan bajo licencia.

Envance Technologies y ProVerde son marcas registradas de Envance Technologies, LLC y se usan bajo licencia.

Envance Technologies y ProVerde son marcas registradas de Envance Technologies, LLC y se usan bajo licencia.

Envance Technologies y ProVerde son marcas registradas de Envance Technologies, LLC y se usan bajo licencia.

Envance Technologies y ProVerde son marcas registradas de Envance Technologies, LLC y se usan bajo licencia.

PROVERDE™

APLIQUE A LAS SIGUIENTES PLAGAS
Avispas, avispones, chusqueas amarillas y abejas.

DONDE USARLO
Use como un spray de contacto para matar plagas picadoras en áreas comunes de ambientes residenciales, comerciales e institucionales tales como terrazas y patios, parques infantiles, complejo de vivienda, áreas y muelles, vertederos urbanos, instalaciones de almacenamiento, garajes, y otros ambientes interiores y exteriores.

INSTRUCCIONES DE USO
Use la etiqueta entera antes de usar y use el producto según las instrucciones. Se recomienda que las aplicaciones con el propósito de matar los nidos de insectos picadores se hagan después del anochecer, ya que los miembros de la colonia estarán menos activos. Se debe usar cuidado y tomar las precauciones apropiadas para mitigar el peligro de la aplicación del producto a los insectos picadores y sus nidos al intentar destruirlos las horas de luz. Los aplicadores deben considerar el uso de veles protectoras y trajes de apicultura.

NOTA: Para resultados óptimos, la aplicación debe hacerse durante el amanecer o el atardecer cuando hay poca actividad de los insectos y los miembros de la colonia están dentro del nido. Manténgase a una distancia segura del nido y asuma una posición de observación respecto al sitio del nido. Este producto produce un chorro que alcanza hasta los 15 pies de distancia. No se debe pararse del nido. Apunte el producto hacia el nido al mantener el envase vertical con la boquilla dirigida lejos de la cara y con el viento prevaleciente a tu espalda. Presione la boquilla y aplique el producto hasta que el nido se haya saturado por completo para asegurar que se elimina la población entera. Se recomienda que se lleve a cabo una inspección de seguimiento a las 24 horas para asegurarse de que se haya matado al nido por completo. Espere hasta que no se observe ninguna actividad antes de intentar quitar el nido.

INSECTOS PICADORES: Mantenga el producto vertical con la boquilla apuntada lejos de la cara. Para los mejores resultados, rocíe al insecto hasta mojarlo por completo.

AVISOS DE PRECAUCIÓN
Con el contacto directo, puede causar irritación moderada en los ojos. Evítense las exposiciones a calor, chispas, partículas y llamas abiertas. Containdo bajo presión. No perforar ni incinerar el envase. La exposición a temperaturas sobre 130° F puede causar que el envase se estalle. No aplique directamente a las plantas. Las superficies tratadas pueden estar resbalosas cuando estén mojadas; limpie el exceso del material. Este producto puede manchar las superficies porosas o no selladas. Antes de usar, rocíe un área desproporcionada para determinar si se manchará.

PRIMEROS AUXILIOS
Contacto con los ojos: Mantenga los ojos abiertos y enjuáguelos con agua lentamente y con cuidado por 15 a 20 minutos. Si tiene lentes de contacto puestas, quítelas después de los primeros 5 minutos; luego, continúe enjuagándose los ojos. **Contacto con la piel:** Lave a fondo con jabón y agua. Si se irrita: Muéva a (a) persona(s) afectada(s) al aire libre. Si se irrita: Enjuáguese la boca con agua y comuníquese con un médico para consejos de tratamiento. Si se presenta una irritación, comuníquese con un médico o un centro de control de enfermedades para consejos de tratamiento. Tenga la etiqueta o el envase del producto a la mano al llamar al médico o al buscar tratamiento.

ALMACENAMIENTO Y DESECHO
Cualquier producto no usado deberá ser desechado en el sitio o en un vertedero de desechos apropiado.

ALMACENAMIENTO: No perforar ni incinerar el envase. Almacene a temperatura ambiente, lejos de fuentes de calor, chispas o llamas abiertas. No exponga el calor ni almacene a temperaturas superiores a 130° F.

DESECHO: No neutralice ni rellene este envase. Ya cuando el envase esté vacío, recíbelo, si es posible, o deséchelo en la basura.

PARA DERRAMES, FUGAS, INCENDIOS O EXPOSICIÓN A QUÍMICOS, LLAME AL CHEMTREC 1-800-424-9300

PARA URGENCIAS MÉDICAS SOLAMENTE, LLAME AL 1-866-257-4118

*Voltaje de ruptura dieléctrica de 33,730 voltios



DOT 2Q M5749 DSC
L9171 - v010115

Manufactured by Envance
Technologies, LLC
5151 McCrimmon Parkway,
Suite 275, Morrisville,
NC 27560
1 (855) 217-5247
www.envance-tech.com

ENVANCE
TECHNOLOGIES

PATENTS:
www.envance-tech.com/legal



ProVerde™ Technical Presentation
ProVerde™ Wasp & Hornet Killer
Active Ingredient Information

ACTIVE INGREDIENTS:

Geraniol [106-24-1].....0.89%
Other Ingredients**99.11%
Total100.00%

**White mineral oil, 2-propanol, vanillin,
triethyl citrate, isopropyl myristate,
carbon dioxide



ProVerde™ Technical Presentation

ProVerde™ Wasp & Hornet Killer

Precautionary Statements

PRECAUTIONARY STATEMENTS

With direct contact, may cause moderate eye irritation. Wash hands thoroughly with soap and water after handling. Avoid contact with eyes and skin. **FLAMMABLE**. Keep away from heat, sparks, grills, and open flames. Contents under pressure. Do not puncture or incinerate container. Exposure to temperatures above 130° F may cause container to burst. Do not apply directly to plants. Treated surfaces may be slippery when wet; clean up excess material. This product may stain porous or unsealed surfaces. Prior to use, spray a small inconspicuous area to determine if staining will occur.

- Care and proper precautions should be taken to mitigate the hazard of application to stinging insects and their nests when attempted during daylight hours. Applicators should consider the use of protective bee veils and suits.
- **Nest:** For optimal results, application should be made during dawn or dusk when insect activity is low and colony members are present within the nest. Stand a safe distance away from the nest and take a position up wind of the nest site. Do not stand directly underneath the nest. Wait until no further activity is observed prior to attempting to remove the nest.



ProVerde™ Technical Presentation ProVerde™ Wasp & Hornet Killer Restrictions

- **FLAMMABLE.** Keep away from heat, sparks, grills, and open flames.
- Contents under pressure. Do not puncture or incinerate container. Exposure to temperatures above 130° F may cause container to burst.
- Do not apply directly to plants.
- Treated surfaces may be slippery when wet; clean up excess material.
- This product may stain porous or unsealed surfaces. Prior to use, spray a small inconspicuous area to determine if staining will occur.



ProVerde™ Technical Presentation

ProVerde™ Wasp & Hornet Killer

Application Sites

WHERE TO USE

Use as a contact spray for killing stinging pests in common residential, commercial and institutional areas such as decks and patios, playgrounds, housing complexes, docks, outdoor refuse areas, storage facilities, attics, garages, and other indoor and outdoor environments.



ProVerde™ Technical Presentation

ProVerde™ Wasp & Hornet Killer

Application Rate

- **Nests:** Aim product at nest by holding container upright with nozzle directed away from face with the prevailing wind at your back. Press nozzle down and apply product until the nest is thoroughly saturated to ensure population is terminated.

- **Stinging Pests:** Hold product upright with nozzle directed away from face. For best results, spray insect(s) thoroughly until wet.

- Kills on contact
- Destroys nests
- Sprays up to 15 feet
- Safe for use on utility & telecom equipment
 - Dielectric breakdown voltage of 33,730 volts



ProVerde™ Technical Presentation

ProVerde™ Wasp & Hornet Killer

Insects Targeted

APPLY TO THE FOLLOWING PESTS

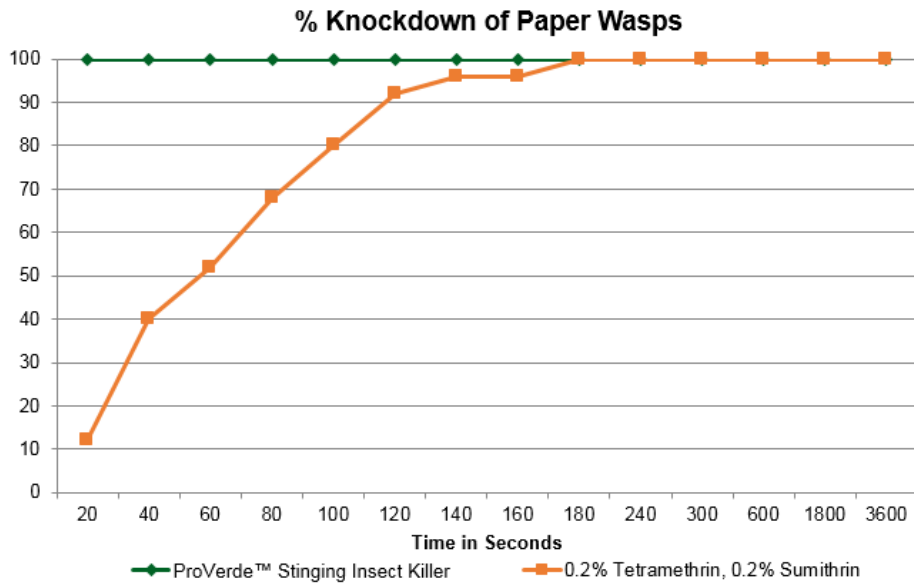
Wasps, hornets, yellowjackets and bees.



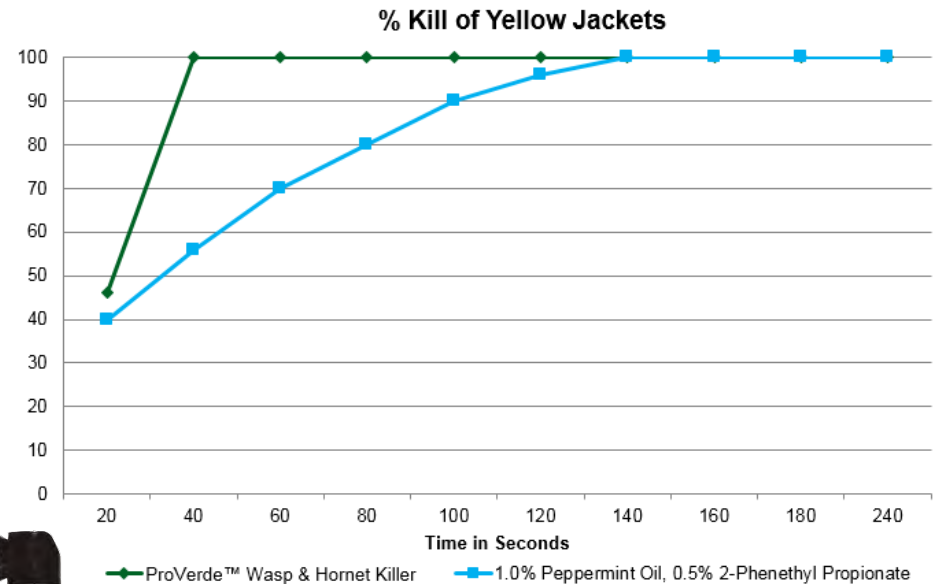
ProVerde™ Technical Presentation

ProVerde™ Wasp & Hornet Killer

Comparative Efficacy Data



Paper Wasps Direct Spray Bioassay
Aerosol Spray Assay – 5 insects/assay unit – 5 reps



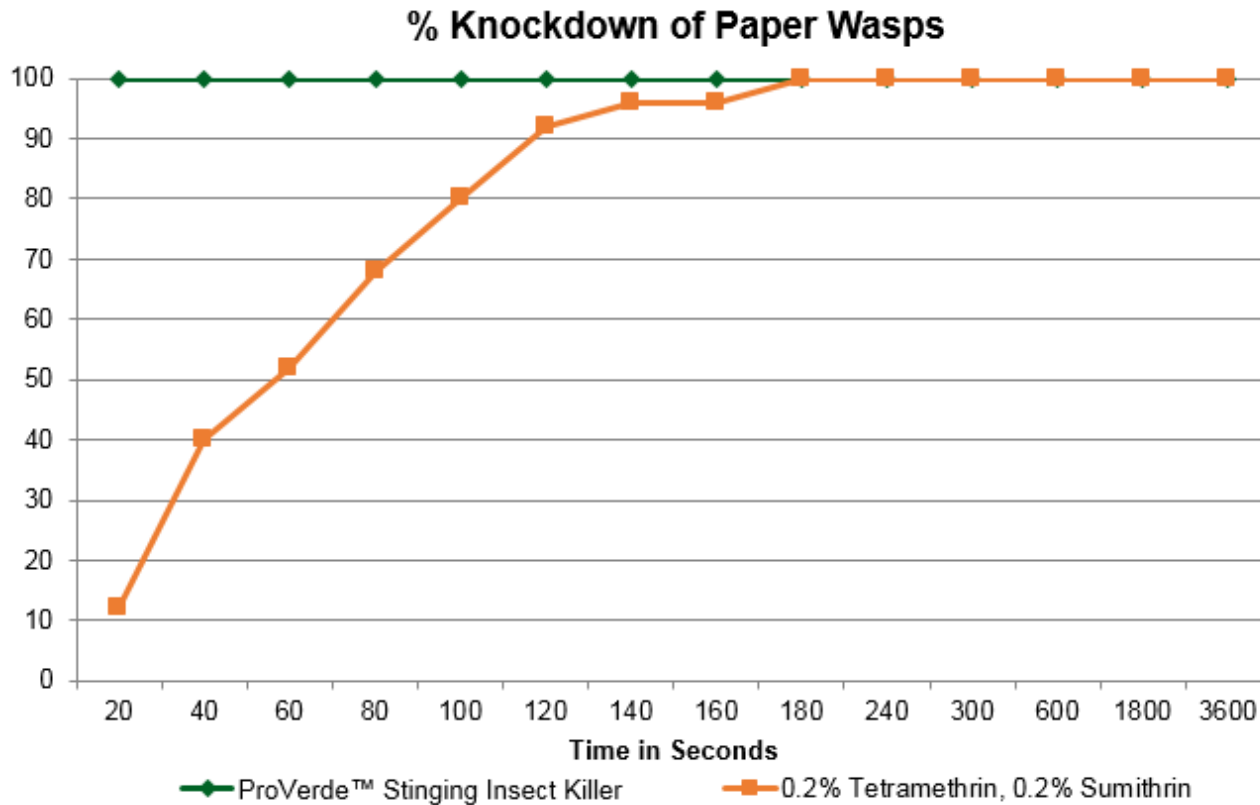
Yellow Jackets Direct Spray Bioassay
Aerosol Spray Assay – 5 insects/assay unit – 5 reps



ProVerde™ Technical Presentation

ProVerde™ Wasp & Hornet Killer

Comparative Efficacy Data



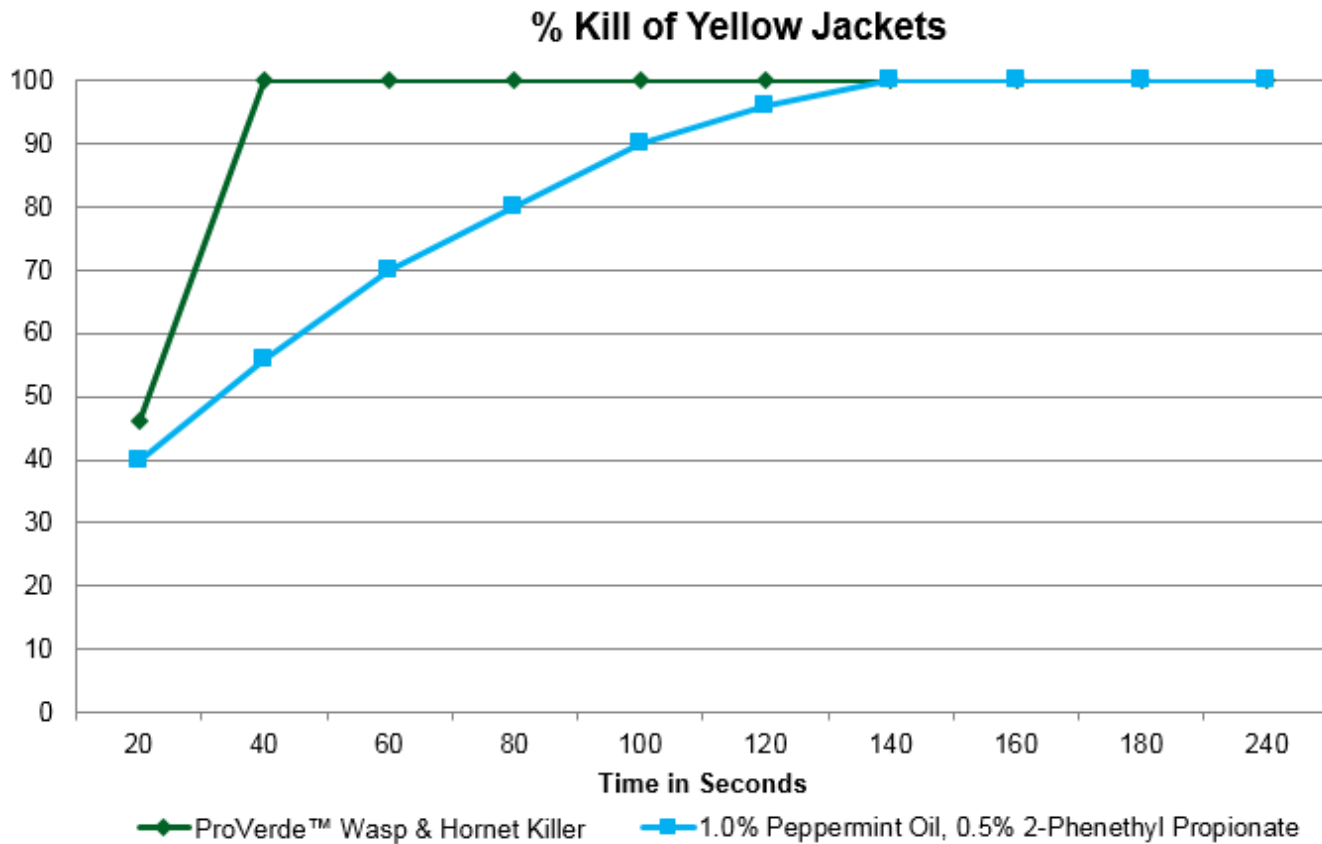
Paper Wasps Direct Spray Bioassay
Aerosol Spray Assay – 5 insects/assay unit – 5 reps



ProVerde™ Technical Presentation

ProVerde™ Wasp & Hornet Killer

Comparative Efficacy Data



Yellow Jackets Direct Spray Bioassay
Aerosol Spray Assay – 5 insects/assay unit – 5 reps



ProVerde™ Technical Presentation

ProVerde™ Dust Insecticide



ProVerde™ Technical Presentation

ProVerde™ Dust Insecticide

Product Label

ANTS • ROACHES • SPIDERS • SILVERFISH

PROVERDE™

Dust Insecticide

Kills & controls!

Safe for kitchens, schools, hospitals
and other sensitive areas

Safe for use around children & pets

BREAKTHROUGH TECHNOLOGY

CAUTION
KEEP OUT OF REACH
OF CHILDREN

See back panel for
additional precautionary
statements.

PRECAUCIÓN
MANTÉNGA FUERA DEL
ALCANCE DE LOS NIÑOS

Ver la etiqueta en el dorso
para avisos de
precaución adicionales.

ACTIVE INGREDIENTS:
Thymol CA (0007-49-3) 4.1%
Other Ingredients 95.9%
Total 100.0%

*Calcium silicate, sodium bicarbonate,
calcium carbonate, isopropyl myristate,
wintergreen oil

NET WEIGHT 1 lb (454 g)

PROVERDE™

PRECAUTIONARY STATEMENTS
With direct contact, causes moderate eye irritation. Avoid contact with eyes and skin. Product is not intended for use on animals. During prolonged exposure to dust, use of a NIOSH approved respirator is recommended. Do not apply directly to plants.

FIRST AID
If In Eyes: If in eyes, hold eye open and rinse slowly and gently with water for 15-20 minutes. Remove contact lenses, if present, after the first 5 minutes. Then continue rinsing. **If In Skin:** Wash thoroughly with soap and water. **If Inhaled:** Move affected person(s) to fresh air. If breathing, first aid measures are not necessary. If irritation develops, consult a doctor or poison control center for treatment advice. Have the product label or container with you when calling a doctor or going for treatment.

DIRECTIONS FOR USE
Read entire label prior to use and use product as directed. Product may be applied directly or with a mistral or power blower. The amount of product to be applied will vary with the site but should usually be in the range of 1-2-45 oz per 100 sq. ft. For heavy infestations or for use on spiders or large insects such as American cockroaches, the 45 oz. rate is recommended. Store product in a dry area between uses.

APPLY TO THE FOLLOWING PESTS
Cockroaches (including both resistant and non-resistant strains), ants, fleas, crickets, spiders, silverfish, wasps, and other crawling and flying insects.

WHERE TO USE
Dust may be applied to areas where insects travel or travel. To be used in and around residential and commercial/industrial structures such as apartments, condominiums, homes, hotels, motels, resorts, hospitals, multi-family housing, schools, nursing homes, offices, restaurants, kitchens, laboratories, factories, modes of transport (not to include airplane cockpits), garages, storage units and other areas of human habitation or activity. Previews up to 30 days control.

FOR INDOOR USE: Apply to wall voids, cracks and crevices where insects harbor, including, but not limited to, behind baseboards, under doors and under carpet tack strips. Prior to use, seal all inaccessible areas to check for possible staining.

COCKROACHES: Apply to wall voids, cracks and crevices where cockroaches may be harboring. Dust will kill these cockroaches that are directly contacted and those that enter the area after application.

ANTS: Apply directly to ant trails or to nesting sites. Carpenter ants may nest in areas associated with excess moisture or leaks within the structure. Inspect and locate such areas where nests and ant activity is suspected. It may be necessary to drill holes in order to treat into hidden nest areas where ants may harbor, nest or travel.

FOOD AREAS AND FOOD HANDLING: Apply product directly into voids in food preparation areas such as walls, floorboards, under and around appliances, visible discolored areas and any other areas where insects may be hiding or harboring. For use on non-food contact surfaces, if incidental contact occurs, clean up thoroughly.

FOR OUTDOOR USE: For control of crawling pests that enter structures from outdoor areas, apply along edges of patios, cracks or expansion joints in or along foundations or pavement, driveways, porches, downspouts (to include french and sliding glass doors), window sills and weep holes. Dust may also be applied in those areas where water meter around the structure to include under storm drains, under and around septic plants, patio furniture, tables, seats and chairs. For best results, apply dust directly to insects, to avoid or if dust becomes wet.

STINGING INSECTS: Stinging insects may be killed using this product. Care should be taken when attempting to kill these insects. The applicator may wish to consider the use of an aerosol contact kill product such as ProVerde™ Fly & Hornet Killer for optimal results. Application should be made during dawn or dusk when insect activity is low and colony members are present within the nest. Using a mist or power blower, apply dust directly into the nest entrance or to the vent area where stinging insects have colonies. Care should be taken to inspect and locate all nest entry areas. It may be necessary to create application access by drilling holes where outside. Follow up to check for complete control of nest after 24 to 48 hours. Note that nests may be located either indoors or outdoors.

STORAGE AND DISPOSAL
Any unused product must be disposed of on site or at an approved waste disposal facility.

STORAGE: Store in a cool, dry area away from heat, sparks and open flame.

DISPOSAL: Do not reuse or refill this container. When container is empty, recycle if available or dispose of it locally.

FOR CHEMICAL SPILL, LEAK, FUME OR EXPOSURE CALL: CHEMTREC 1-800-424-9300

FOR MEDICAL EMERGENCIES ONLY CALL: 1-866-257-4118

© 2015 Envance Technologies, LLC
Envance Technologies and ProVerde are trademarks of Envance Technologies, LLC and are used under license.

This product has not been registered by the United States Environmental Protection Agency, Envance Technologies, LLC represents that this product qualifies for exemption under the Federal Insecticide, Fungicide, and Rodenticide Act.

Envance Technologies y ProVerde son marcas registradas de Envance Technologies, LLC y se usan bajo licencia.
Este producto no ha sido registrado por la Agencia de Protección Ambiental de los Estados Unidos, Envance Technologies, LLC representa que este producto califica para exención bajo la Ley Federal de Insecticidas, Fungicidas y Rodenticidas.

AVISOS DE PRECAUCIÓN
Con el contacto directo, puede causar irritación moderada en los ojos. El producto no se destina para uso en animales. Durante la exposición prolongada al polvo, se recomienda el uso de un respirador aprobado por el Instituto Nacional para Seguridad y Salud Ocupacional (NIOSH) por uso en interiores. No aplicar directamente a las plantas.

PRIMEROS AUXILIOS
Contáctese con los ojos: Manténgalos bien abiertos y enjuáguelos con agua abundantemente y con cuidado por 15 a 20 minutos. Si tiene lentes de contacto puestas, quítelas después de los primeros 5 minutos. Luego continúe enjuagando. **Contáctese con la piel:** Lávese con agua y jabón. Si se irrita, consulte a un médico o al centro de control de toxicología. **Contáctese con la nariz:** Si se irrita, consulte a un médico o al centro de control de toxicología. **Contáctese con la boca:** Si se irrita, consulte a un médico o al centro de control de toxicología. **Contáctese con la ropa:** Si se irrita, consulte a un médico o al centro de control de toxicología.

INDICACIONES DE USO
Lea toda la etiqueta antes de usar y use el producto según las instrucciones. El producto se puede aplicar directamente o con un nebulizador manual o un nebulizador eléctrico. La cantidad del producto a ser aplicada variará con el sitio pero debe ser usualmente en el rango de entre 1 y 45 onzas por 100 pies cuadrados. Para infestaciones pesadas o para usar en arañas o grandes insectos como las cucarachas americanas, se recomienda el uso de 45 onzas. Almacenar el producto en un área seca entre usos.

APLICAR A LAS SIGUIENTES PLAGAS
Cucarachas (incluyendo ambas resistentes y no resistentes), hormigas, pulgas, ácaros, arañas, cucarachas de jardín, avispa y otros insectos que se arrastran y vuelan.

DÓNDE USARLO
El polvo se puede aplicar a áreas donde se refugian o donde los insectos viven. Para usar dentro de la estructura residencial, comercial o industrial como apartamentos, condominios, hogares, hoteles, motels, centros turísticos, hospitales, viviendas multifamiliares, escuelas, lugares de negocios, oficinas, restaurantes, cocinas, laboratorios, fábricas, modos de transporte (no incluye cabina de avión), garajes, unidades de almacenamiento y otras áreas de habitación humana. Previews hasta 30 días de control.

PARA USO INTERIOR: Aplique a huecos de pared, grietas y fisuras donde los insectos se esconden. Incluyendo, pero no limitado a, detrás de alfombras, debajo de puertas, baseboards y debajo de los frentes de los muebles. Antes de usar, haga una prueba en una muestra para determinar si se mancha.

CUCARACHAS: Aplique a huecos de pared, grietas y fisuras donde las cucarachas se esconden. El polvo matará a las cucarachas que están directamente en contacto con el producto y a las cucarachas que entren en el área después de su aplicación.

FORMIGAS: Aplique directamente a las rutas de hormigas o a sus nidos. Las hormigas que se arrastran pueden entrar en áreas sensibles con acceso de humedad o fugas dentro de la estructura. Inspeccione y localice tales áreas donde se sospecha la presencia de nidos y actividad de hormigas. Puede que sea necesario perforar agujeros para poder tratar las áreas donde se esconden donde las hormigas pueden refugiarse, andar o viajar.

ÁREAS DE PREPARACIÓN Y MANEJO DE ALIMENTOS: Aplique el producto directamente dentro de los huecos en las áreas de preparación de alimentos como paredes, techos, debajo de la alfilería de los muebles, áreas de almacenamiento de alimentos y cualquier otra área donde puedan encontrarse o refugiarse los insectos. Para uso en superficies no comestibles, si ocurre contacto accidental, limpie a fondo.

PARA USO EXTERIOR: Para controlar a los insectos que entran en las estructuras desde áreas exteriores, aplique a lo largo de los bordes de las patios, grietas o juntas de dilatación en o a lo largo de los cimientos o el pavimento, aceras, veredas, bajantes, patios, y debajo de las puertas exteriores. En puertas, cornisales, alféizares y marcos de puertas de ventanas, también puede aplicarse en áreas donde los insectos pueden entrar en las estructuras, tales como debajo de las alfombras, debajo de la alfilería de la alfilería en techos, muebles de patio, cubiertas, decks y porches. Para mejores resultados, aplique el polvo directamente a los insectos, siempre según sea necesario a sí mismo o a su ropa.

INSECTOS PUNZANTES: Los insectos punzantes pueden ser matados por medio de este producto. Se debe usar cuidado al intentar matar estos insectos. El aplicador puede desear considerar el uso de un producto de contacto aerosolizado en forma de nebulizador manual o de nebulizador eléctrico como ProVerde™ Fly & Hornet Killer. Para mejores resultados, la aplicación debe hacerse durante el amanecer o al atardecer cuando hay poca actividad de los insectos y los miembros de la colonia están dentro del nido. Se debe tener la precaución de inspeccionar y localizar todos los huecos de entrada al nido. Puede ser necesario crear acceso para aplicar el producto agujeros dentro de las paredes. Debe tenerse especial cuidado para verificar que no haya fugas de pesticidas cuando se está agujerando las paredes. Tenga en cuenta que los nidos pueden estar dentro de las paredes o en el exterior cerca de la estructura.

ALMACENAMIENTO Y DERECHO
Cualquier producto no usado deberá ser destruido en el sitio o en un vertedero de desechos aprobados.

ALMACENAMIENTO: Almacene en un área fresca y seca lejos de fuentes de calor, chispas o flamas abiertas.

DESECHO: No reutilice ni rellene este envase. No vacíe el envase en el suelo, en el agua, en el drenaje, en el alcantarillado o en los desagües.

PARA INFORMACIÓN, PREGUNTAS O EXPOSICIÓN A QUÍMICOS, LLAME AL CHEMTREC 1-800-424-9300

PARA EMERGENCIAS MÉDICAS SOLOAMENTE, LLAME AL 1-866-257-4118

Manufactured by Envance Technologies, LLC
5151 McCormick Parkway,
Suite 275, Morrisville,
NC 27560
www.envancecorp.com

ENVANCE
TECHNOLOGIES, LLC

PATENTS:
www.envancecorp.com/legal

W9176-v020315



ProVerde™ Technical Presentation
ProVerde™ Dust Insecticide
Active Ingredient Information

ACTIVE INGREDIENTS:

Thyme Oil [8007-46-3].....	4.1%
Other Ingredients*	95.9%
Total	100.0%

*Calcium silicate, sodium bicarbonate, calcium carbonate, isopropyl myristate, wintergreen oil



ProVerde™ Technical Presentation

ProVerde™ Dust Insecticide

Precautionary Statements

PRECAUTIONARY STATEMENTS

With direct contact, causes moderate eye irritation. Avoid contact with eyes and skin. Product is not intended for use on animals. During prolonged exposure to dust, use of a NIOSH approved respirator is recommended. Do not apply directly to plants.

→ **Prior to use:** Test a small inconspicuous area to check for possible staining



ProVerde™ Technical Presentation ProVerde™ Dust Insecticide Restrictions

- Product is not intended for use on animals.
- Do not apply directly to plants.
- Not to be used in airplane cockpits.



ProVerde™ Technical Presentation

ProVerde™ Dust Insecticide

Application Sites

WHERE TO USE

Dust may be applied to areas where insects harbor or travel. To be used in and around residential and commercial/industrial structures such as apartments, condominiums, homes, hotels, motels, resorts, hospitals, multi-family housing, schools, nursing homes, offices, restaurants, kitchens, laboratories, factories, modes of transport (not to include airplane cockpits), garages, storage units and other areas of human habitation or activity. Provides up to 30 days control.

FOR INDOOR USE: Apply to wall voids, cracks and crevices where insects harbor, including, but not limited to: behind backsplashes, baseboards and under carpet tack strips. Prior to use, test a small inconspicuous area to check for possible staining.

FOOD AREAS AND FOOD HANDLING: Apply product directly into voids in food preparation areas such as walls, floorboards, under and around appliances, waste disposal areas and any other area where insects may be hiding or harboring. For use on non-food contact surfaces. If incidental contact occurs, clean up thoroughly.

FOR OUTDOOR USE: For control of crawling pests that enter structures from outdoor areas, apply along edges of patios, cracks or expansion joints in or along foundations or pavement, driveways, porches, doorways (to include French and sliding glass doors), window sills and weep holes. Dust may also be applied in those areas where pests harbor around the structure to include under doormats, under and around potted plants, patio furniture, columns, eaves and soffits. For best results, apply dust directly to insects. Re-apply as needed or if dust becomes wet.



ProVerde™ Technical Presentation

ProVerde™ Dust Insecticide

Application Rate

- The amount of product to be applied will vary with the site, but should usually be in the range of 12-45 oz. per 100 ft.
 - For heavy infestations or for use on spiders or larger insects such as American cockroaches, the 45 oz. rate is recommended.
- For best results, apply dust directly to insects. Re-apply as needed or if dust becomes wet.
- If incidental contact occurs on food contact surfaces, clean up thoroughly.
- **Stinging Insects:** Using a hand or powered duster, apply dust directly into the nest entrance or to the void area where stinging insects have colonized. Care should be taken to inspect and locate all nest entry areas. It may be necessary to create application access by drilling holes where suitable. Follow up to check for complete control of nest after 24 to 48 hours. Note that nests may be located either indoors or outdoors.



ProVerde™ Technical Presentation

ProVerde™ Dust Insecticide

Insects Targeted

APPLY TO THE FOLLOWING PESTS

Cockroaches (including both resistant and non-resistant strains), ants, fleas, crickets, spiders, silverfish, wasps, and other crawling and flying insects

COCKROACHES: Apply to wall voids, cracks and crevices where cockroaches may be harboring. Dust will kill those cockroaches that are directly contacted and those that enter the area after application.

ANTS: Apply directly to ant trails or to nesting sites. Carpenter ants may nest in areas associated with excess moisture or leaks within the structure. Inspect and locate such areas where nests and ant activity is suspected. It may be necessary to drill holes in order to treat into hidden void areas where ants may harbor, nest or travel.

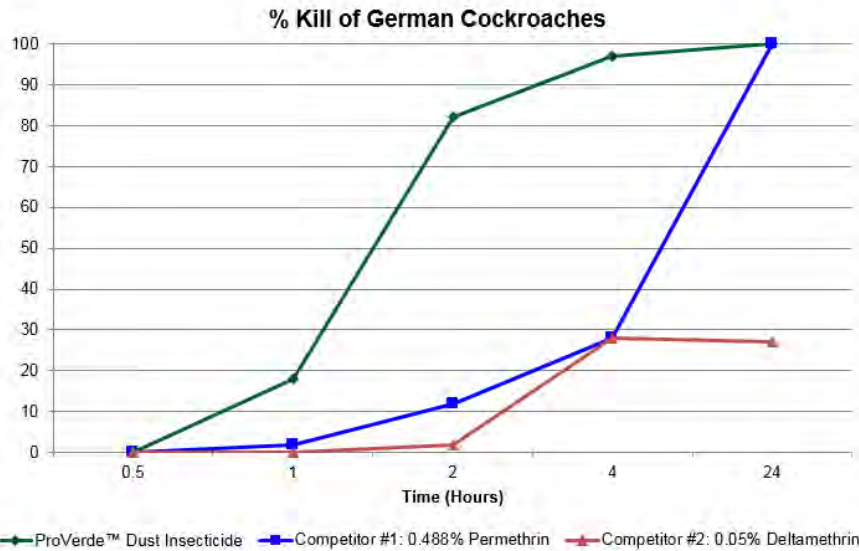
STINGING INSECTS: Stinging insects may be killed using this product. Care should be taken when attempting to kill these insects. The applicator may wish to consider the use of an aerosol contact kill product such as ProVerde™ Wasp & Hornet Killer. For optimal results, application should be made during dawn or dusk when insect activity is low and colony members are present within the nest. Using a hand or powered duster, apply dust directly into the nest entrance or to the void area where stinging insects have colonized. Care should be taken to inspect and locate all nest entry areas. It may be necessary to create application access by drilling holes where suitable. Follow up to check for complete control of nest after 24 to 48 hours. Note that nests may be located either indoors or outdoors.



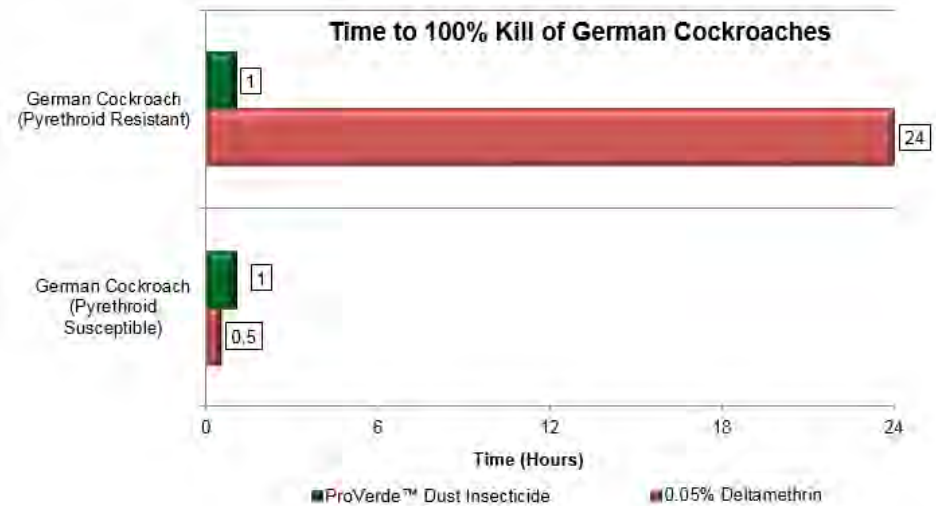
ProVerde™ Technical Presentation

ProVerde™ Dust Insecticide

Comparative Efficacy Data vs. Synthetic Competitors



German Cockroaches Forced Exposure Bioassay
Dust Forced Exposure Assay – 10 insects/Assay Unit – 3 Reps



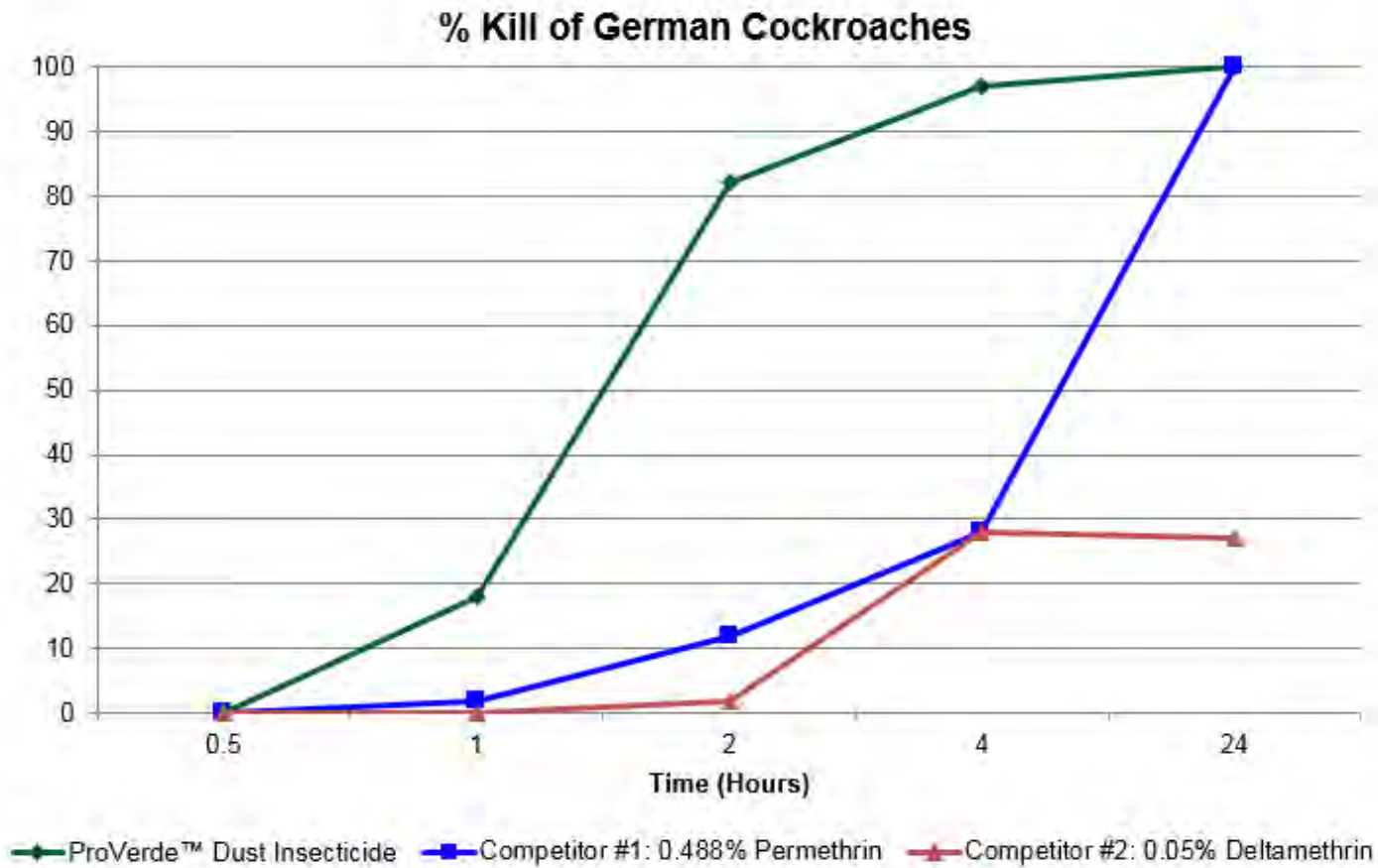
German Cockroaches Forced Exposure Bioassay
Dust Forced Exposure Assay – 10 insects/Assay Unit – 3 Reps

→ Envance Dust Insecticide is comparable to 0.05% Deltamethrin insecticide vs. pyrethroid-susceptible cockroaches, but has superior performance against pyrethroid-resistant insects.

ProVerde™ Technical Presentation

ProVerde™ Dust Insecticide

Comparative Efficacy Data vs. Synthetic Competitors



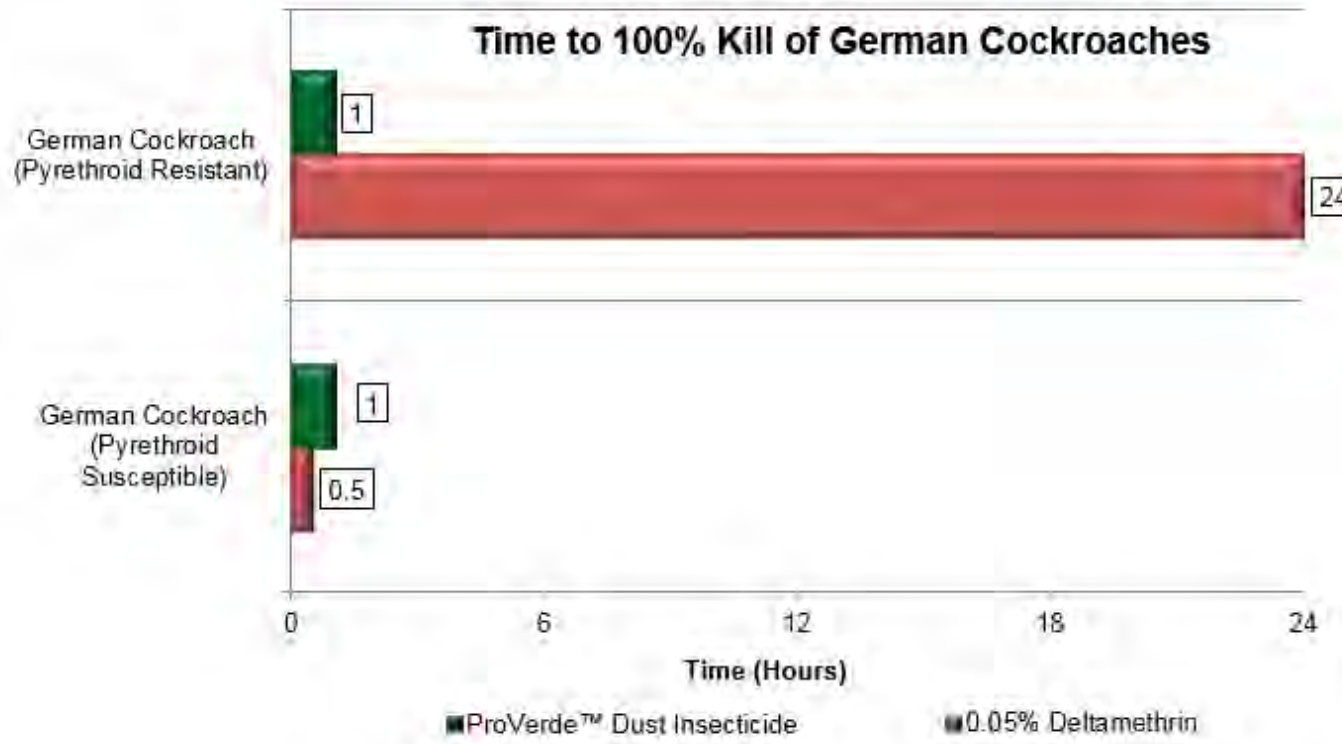
German Cockroaches Forced Exposure Bioassay
 Dust Forced Exposure Assay – 10 insects/Assay Unit – 3 Reps



ProVerde™ Technical Presentation

ProVerde™ Dust Insecticide

Comparative Efficacy Data vs. Synthetic Competitors



German Cockroaches Forced Exposure Bioassay
 Dust Forced Exposure Assay – 10 insects/Assay Unit – 3 Reps

→ Envance Dust Insecticide is comparable to 0.05% Deltamethrin insecticide vs. pyrethroid-susceptible cockroaches, but has superior performance against pyrethroid-resistant insects.



ENVANCE

TECHNOLOGIES™



PROVERDE™

Technical Presentation