

mocap[®]

nematicide • insecticide

AVAILABLE IN 2 FORMULATIONS

for application flexibility

MOCAP[®] 15G Granular Formulation
MOCAP EC Liquid Formulation

LABELED ON 11 CROPS

POTATOES



SWEET POTATOES



MINT



CUCUMBER



CABBAGE

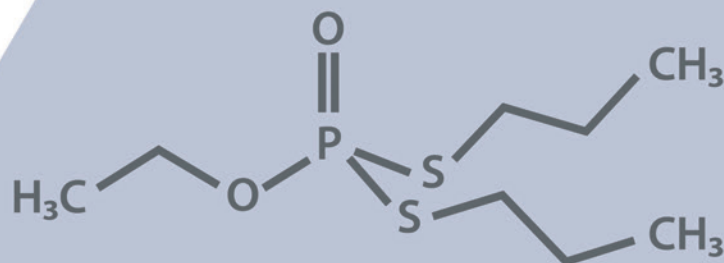


CORN (field and sweet)
BEANS (snap and lima)
BANANAS and PLANTAINS
SUGARCANE
TOBACCO
HOPS

Active Ingredient

Ethoprop

(O-Ethyl S, S-Dipropyl Phosphorodithioate)





mocap®



Crops Labeled by Formulation

MOCAP EC (6lbs ai/gal) EPA No. 5481-9041

Cabbage
Mint
Potatoes
Sweet Potatoes
Hops

MOCAP 15G (15% ai/lb) EPA No. 5481-9040

Cabbage
Mint
Potatoes
Sweet Potatoes
Bananas and Plantain
Beans (Snap and Lima)
Corn (Field and Sweet)
Cucumber
Sugarcane
Tobacco

Packaging Options

MOCAP 15G

Available in 3 convenient packaging options to fit a variety of granular application equipment (40 lb. Lock 'n Load®, 30 lb. bag and 1,000 lb. Supersack).

MOCAP EC

Available in cases of two 2.5 gallon jugs as well as 55 gallon drums for application flexibility.

Broad Spectrum Control

MOCAP formulations provide growers with dependable broad spectrum control of soil insects and nematodes on all key crops for strong stands and high yields in a wide variety of crops.

MOCAP is active on a wide range of nematodes in several crops.

NEMATODES CONTROLLED/SUPPRESSED BY MOCAP 15G

	Bananas & Plantain	Cabbage	Field corn & Sweet corn	Cucumbers	White (Irish) Potato	Sweet Potato	Snap beans & Lima beans	Sugarcane	Tobacco
BURROWING NEMATODES (Radopholus similis)	C								
DAGGER NEMATODES (Xiphinema spp.)			C						
CYST NEMATODES (Heterodera glycines) (Heterodera cruciferae) (Heterodera schachtii)		C							
LESION NEMATODES (Pratylenchus spp.)	C	C	C	C	C		C	C	C
ROOT-KNOT NEMATODES (Meloidogyne spp.) (Meloidogyne hapla) (Meloidogyne incognita) (Meloidogyne arenaria) (Meloidogyne javanica) (Meloidogyne chitwoodi)	C	C	C	C	C	C	C	C	C
LANCE NEMATODES (Hoplaimus spp.) (Hoplaimus tylenchiformis)		S	C	S			S		
SPIRAL NEMATODES (Helicotylenchus spp.) (Rotylenchus spp.)	C		C	C	C	C	C		
STING NEMATODES (Belonolaimus spp.) (Belonolaimus longicaudatus)		C	C	C	C		C		
RING NEMATODES (Criconemella spp.) (Criconemella ornata)			C	C	C		C	C	
RENIFORM NEMATODES (Rotylenchulus reniformis)						C			
STUNT NEMATODES (Tylenchorhynchus spp.) (Tylenchorhynchus claytoni) (Tylenchorhynchus martini)			C	C	C	C	C		C
STUBBY-ROOT NEMATODES (Paratrichodorus spp.) (Trichodorus christiei)		C	C	C	C	C		C	
C.....Control S.....Suppression									

Active on insects: Wireworm, White grubs, Banded cucumber beetle, Corn rootworm, Garden symphylans, and Mint root borer.

nematicide • insecticide

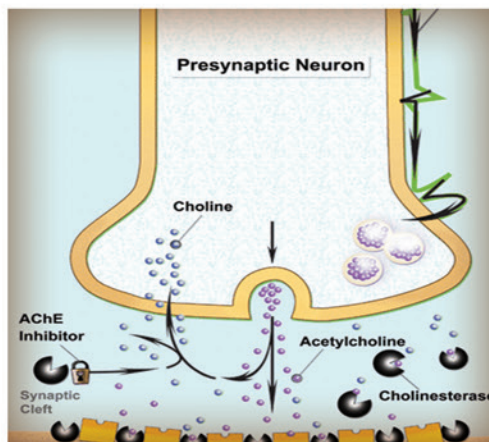


mocap®



Mode of Action

- Inhibits acetylcholinesterase enzyme system.
- Active site is nerve synapse.
- Nematicidal at higher rates (6-12 lbs ai/A).
MOCAP EC 1-2 lbs ai/A.
MOCAP 15G 40-80 lbs ai/A.
- Insecticidal activity at lower rates (4-6 lbs ai/A).
MOCAP EC 0.67-1 gal ai/A.
MOCAP 15G 27-40 lbs ai/A.
- Contact activity only - not systemic.



Strengths

- MOCAP offers outstanding broad-spectrum insect and nematode control to protect yield potential.
- Provides residual control of labeled pests. MOCAP is one of the few non-fumigant products that controls nematodes in potatoes.
- Can be applied preplant, at planting, pre-emergence and post-emergence, depending on crop.
- MOCAP's availability in both a liquid formulation as well as a granular formulation give growers increased application flexibility.

Environmental Fate and Impact

While the rate of metabolism in soil degradation is dependent on a number of factors, the route of MOCAP metabolism is thought to be the same regardless of soil type.

Soil and Environmental Variations

Increasing organic matter
Increasing moisture
Increasing temperature

Ethoprop Soil Life

Increase
Decrease
Decrease

nematicide • insecticide



mocap®



Nematode and Insect Control Solution for Key Crops



POTATOES

- Broad-spectrum control of most nematode species as well as wireworms and symphylans.
- MOCAP 15G and MOCAP EC are both labeled for use in potatoes for application flexibility.
- May be applied in a band on the row or as a broadcast treatment. See labels for rates and timing.
- MOCAP in combination programs with VAPAM® or K-PAM® have provided consistently high yields.



MINT

- For new mint plantings apply preplant for control of symphylans and nematodes.
- For established mint apply after the last harvest of the growing season for control of mint root borer, symphylans, and nematodes.
- MOCAP 15G and MOCAP EC are both labeled for use in mint for application flexibility.
- Review MOCAP labels for specific rates and application directions in mint.



SWEET POTATOES

- Broad-spectrum control of nematodes, wireworms, white grubs, and other insects in sweet potatoes.
- MOCAP 15G and MOCAP EC are both labeled for use in sweet potatoes for application flexibility.
- Apply in a 12 to 15 inch band over the row 2 to 3 weeks before planting.
- Review MOCAP labels for specific rates and application directions in sweet potatoes.

nematicide • insecticide