

Midwest Edition

THE SAFE, MORE FLEXIBLE SOLUTION TO WEED CONTROL IN ALL CORN

Excellent corn safety, wide application window and flexibility with other products — no restrictions with EC tank-mix products, safety with soil and foliar insecticides and use on all corn types makes **Impact® Herbicide** one of the most versatile herbicides available for your corn acres. **Impact** brings the power you need to control tough grass and broadleaf weeds including glyphosate-resistant species.

Flexibility That Fits – Other HPPDs Have Limitations

- **Impact** can be applied at rates up to 2 fl oz/A for control of additional weeds or in sequential applications.
- **Impact** can be used with any soil or foliar applied insecticides registered for use on corn.
- Labeled for aerial application.
- Fits traired, conventional and specialty acres: Field corn including conventional and herbicide resistant corn hybrids (grown for grain, silage or seed), popcorn and sweet corn (grown for ear, kernel or seed). **Impact** may be applied on inbred lines used in field corn, popcorn and sweet corn seed production. Always refer to seed company recommendations before application on inbred lines.
- Proven control of labeled grasses without the need to tank-mix glufosinate or glyphosate.
- Flexible tank-mix partner with traditional grass or broadleaf herbicide premixes in early-POST (V2/V3 corn) applications — providing control of emerged grass and broadleaf weeds plus residual control.
- Performance less affected by cool temperatures than glyphosate.
- Does not kill established perennial grasses in waterways and terraces – providing ease of application.

Impact – The Standard in Corn Safety®

- Applications made to V6 growth stage corn at exaggerated rates up to 6x full use rate for safety demonstration only.*
- Primary weeds: Giant foxtail, common lambsquarters and waterhemp.
- Results show exceptional safety of **Impact** in corn — application at all rates did not injure corn.

Even at Exaggerated Rates, Excellent Corn Development and Yield Was Observed



Impact 4x rate/A plus MSO and AMS



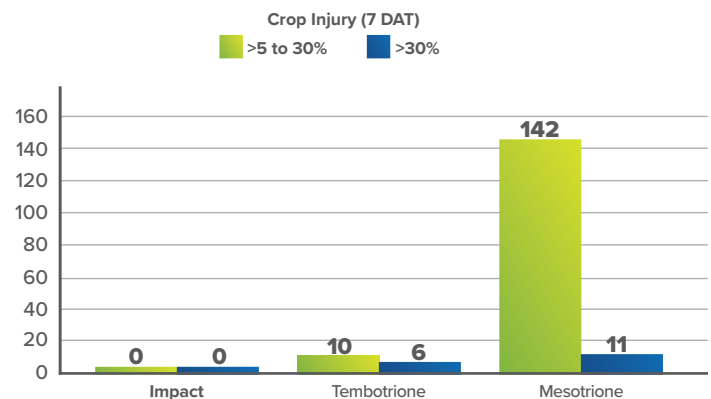
Yield: 236 bu/A – normal ear development

*Maximum label use rate of **Impact** is 2 fl oz/A

Sweet corn hybrids are more susceptible to herbicide damage and are used for establishing safety of corn herbicides.

Sweet Corn Safety With HPPD Herbicides – 387 Hybrids Tested

Y-Axis Shows Number of Hybrids Within a Crop Injury Category*



Sweet corn stage at application V4/V5. University of Illinois (USDA/ARS) 2009 trial. Product rates (2x in 2009). **Impact** = 1.5 fl oz/A, tembotrione = 6.0 fl oz/A and mesotrione = 6.0 fl oz/A. Spray adjuvants = COC (1% v/v) and UAN (2%, v/v) with each treatment.

*Hybrids not shown in graph had injury ratings of 0–5%

See our entire line of products at AMVAC.com

Not All HPPDs Are Created Equal

IMPACT – THE STANDARD IN CORN SAFETY

The proven power for postemergence control of grass and broadleaf weeds including glyphosate-resistant biotypes in corn.

Exceptional Partner for High-Performance Herbicide Programs

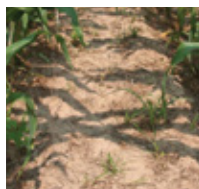
- **Impact** controls glyphosate-resistant broadleaf weeds. For best performance, tank-mixing with atrazine is recommended.
- Can be tank-mixed with S-metolachlor, metolachlor and acetochlor EC formulations.
- **Impact** controls emerged grass and broadleaf weeds to complement the residual partner.

Not all HPPDs are created equal for grass control. **Impact** delivers consistent grass control with or without glyphosate (below).

HPPD Herbicide Comparisons



HPPD Competitor B
3 fl oz + COC + UAN



Impact
0.75 fl oz + MSO + UAN

- All treatments with atrazine, 0.5 lb/A, added.
- Photos, 17 days after application.
- Primary grass species: Smooth crabgrass and seedling johnsongrass.

Flexible Application Window

Work around uncontrollable spring weather. Apply **Impact** in a two-pass sequential program, early-POST, mid-POST or late-POST. If applying to larger weeds and/or dense infestations, use 1 fl oz/A minimum and increase spray volume to obtain optimal coverage.

Impact Ground Application Guidelines

- 15 gallons per acre or more water plus
- AMS at 2-3 lb/A or UAN at 2.5% v/v plus
- **Impact** at 0.75 –2.0 fl oz/A plus
- Atrazine 4L at 0.5–3.0 pt/A (up to 12" corn height) plus
- Methylated seed oil (MSO) at 1.0 to 1.5% v/v

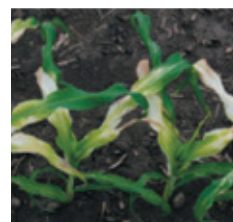
Impact controls glyphosate-resistant weeds including Palmer amaranth and waterhemp.



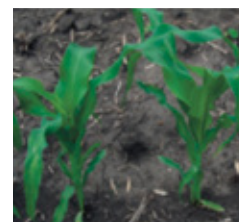
Impact on glyphosate-resistant waterhemp

Not all HPPDs are equal regarding safety to corn. Do not risk crop injury — go with **Impact** Herbicide.

HPPD Herbicide Comparisons



Sweet corn, mesotrione –
3 fl oz + COC



Sweet corn, **Impact** –
0.75 fl oz + COC + UAN