

John Deere™ Insecticide Drop Tube Instructions – Front Mount

Part No. SB020749: weld-on attachment

Drop tube SB020749 is used for SmartBox® system front mount applications on John Deere™ planters equipped with 3 bushel seed boxes and on AGCO White 8000 series planters equipped with 3 bushel seed boxes.

The SB020749 tube is used on 2004 and earlier John Deere MaxEmerge®, MaxEmerge® 2, MaxEmerge® Plus planters that have a fabricated shank.

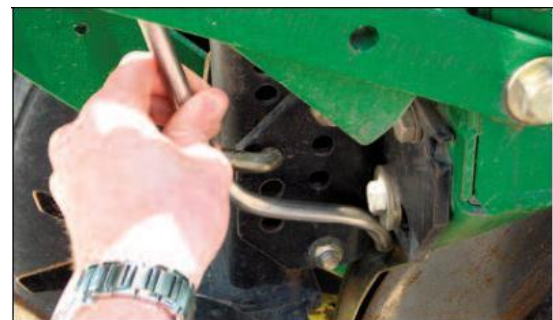
Note: 2005 and newer John Deere™ “XP” models that have a ductile cast iron shank, use John Deere Insecticide Drop Tube – Front Side Mount, Part No. SB020754.

The tube will be welded into a hole that needs to be drilled into each planter row’s opener guard (i.e. dirt shield, rock guard).

The tube has an offset bend to allow for mounting on planters equipped with row cleaners. Additional bending may be required for proper fit up.

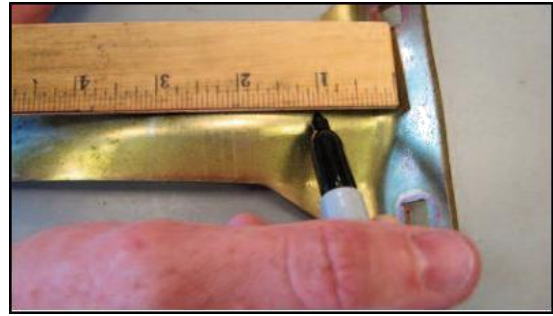
Note: All sections of the tube must be at a minimum of 45° angle for proper insecticide flow.

If row cleaners are not used, the tube’s short bend is not necessary and can be cut off prior to installation and welding if desired.



Installation Instructions:

1. Remove the opener guard
2. Drill a 5/8" diameter hole approximately 1" down from the top and in the center of the opener guard.
3. Insert and align the tube so it protrudes approximately 1" inside of the opener guard and weld into place.
4. Re-attach the opener guard. *Note: If the tube rubs on the inside of the opening disks, it may be necessary to slightly flatten this section of the tube. A minimum tube opening of 3/16" must be maintained.*



General Mounting Instructions: Your SmartBox® system requires that a minimum 45 degree angle be maintained at any point along the product discharge path from the meter outlet to the in-furrow drop tube. The drop tube may need to be bent to adjust. The plastic hose should be cut to length to eliminate any unnecessary slack that could cause a flow restriction. Also, if using a seed firmer the drop tube's foot (if applicable) may need to be cut off or bent up if restricting the firmer's travel.