
SMARTBOX[®] MOUNTING BRACKET INSTALLATION INSTRUCTIONS
JOHN DEERE[™] 1790, 1770NT, AND DB CCS[®] PLANTERS - REAR ROW MOUNT
Bracket Kit Part No. SB012538

*Always use and follow
planter manufacturers
owner's manual
recommended safety
guidelines.*

*Prior to installation, unfold
planter and leave the planter
row units in the raised
position.*

*See the attached Drawing
No. SB012538, the AMVAC
SmartBox System Parts and
Operator's Manual and
www.amvacsmartbox.com
(About SmartBox, then
Videos) website for
additional installation
information.*



- A. Start by unlatching the
seed meter.



- B. Remove the black plastic spacer under the seed meter. This spacer will no longer be used.



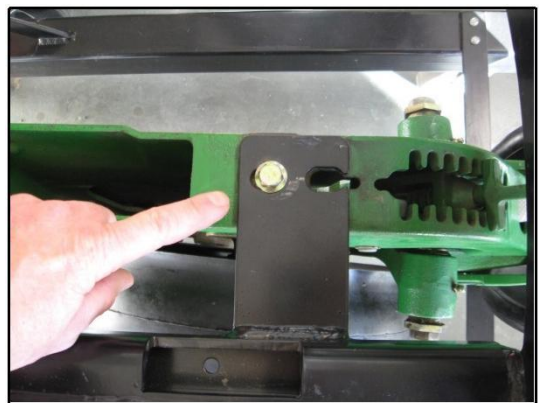
- C. Slide the SmartBox bracket into place under the seed meter.



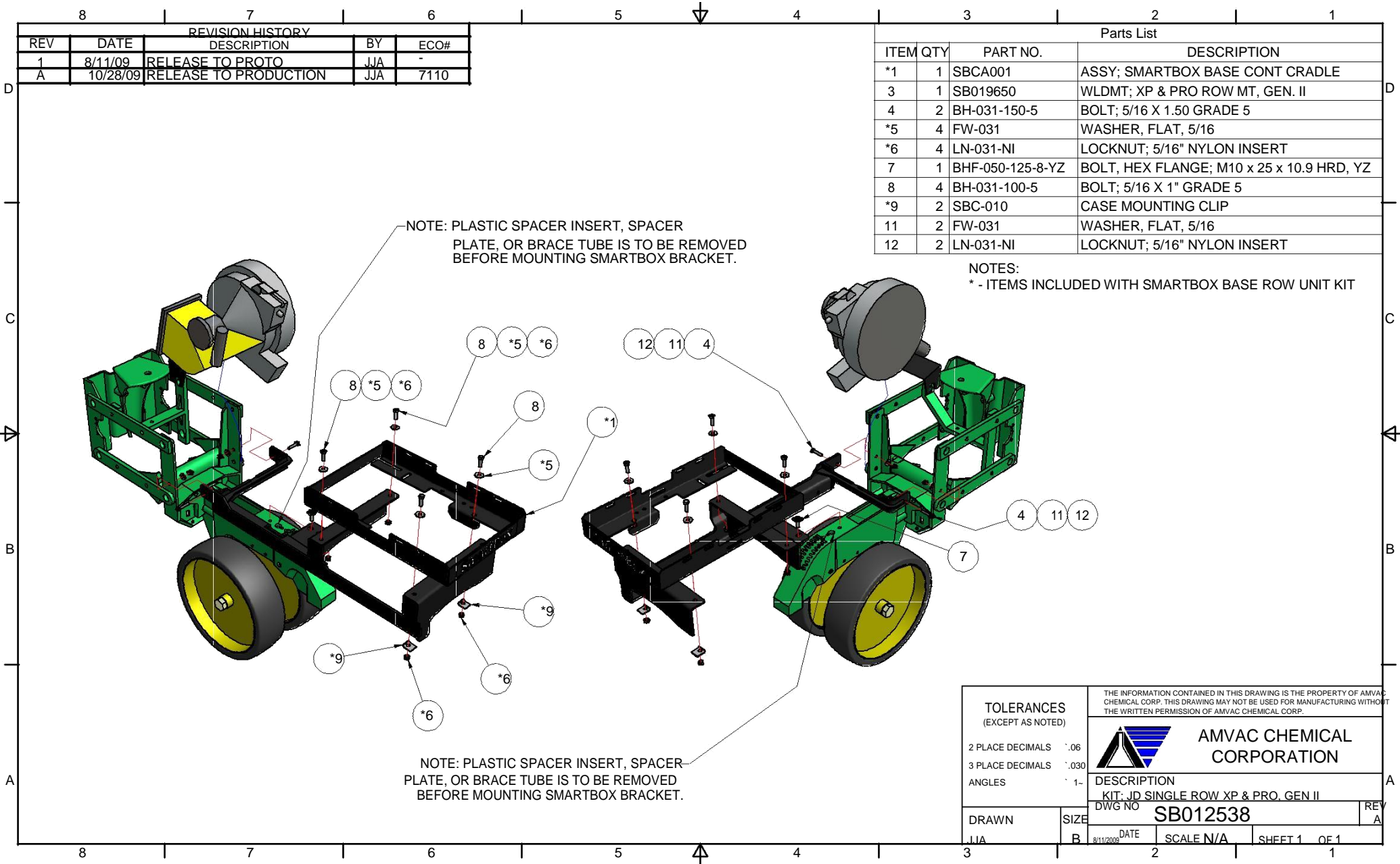
- D. Attach the front left and right mounts through the existing holes in the planter's parallel arms using the 5/16" bolts, washers and locknuts provided.



- E. Fasten the bracket's rear mount with a M10 bolt using the threaded hole that was originally occupied by the black plastic spacer. Reinstall the seed meter.




Refer to the *AMVAC SmartBox System Parts and Operator's Manual* regarding the installation of the remainder of the system.



REVISION HISTORY				
REV	DATE	DESCRIPTION	BY	ECO#
1	8/11/09	RELEASE TO PROTO	JJA	-
A	10/28/09	RELEASE TO PRODUCTION	JJA	7110

Parts List			
ITEM	QTY	PART NO.	DESCRIPTION
*1	1	SBCA001	ASSY; SMARTBOX BASE CONT CRADLE
3	1	SB019650	WLDMT; XP & PRO ROW MT, GEN. II
4	2	BH-031-150-5	BOLT; 5/16 X 1.50 GRADE 5
*5	4	FW-031	WASHER, FLAT, 5/16
*6	4	LN-031-NI	LOCKNUT; 5/16" NYLON INSERT
7	1	BHF-050-125-8-YZ	BOLT, HEX FLANGE; M10 x 25 x 10.9 HRD, YZ
8	4	BH-031-100-5	BOLT; 5/16 X 1" GRADE 5
*9	2	SBC-010	CASE MOUNTING CLIP
11	2	FW-031	WASHER, FLAT, 5/16
12	2	LN-031-NI	LOCKNUT; 5/16" NYLON INSERT

NOTES:
* - ITEMS INCLUDED WITH SMARTBOX BASE ROW UNIT KIT

TOLERANCES (EXCEPT AS NOTED)		THE INFORMATION CONTAINED IN THIS DRAWING IS THE PROPERTY OF AMVAC CHEMICAL CORP. THIS DRAWING MAY NOT BE USED FOR MANUFACTURING WITHOUT THE WRITTEN PERMISSION OF AMVAC CHEMICAL CORP.	
2 PLACE DECIMALS .06		 AMVAC CHEMICAL CORPORATION	
3 PLACE DECIMALS .030			
ANGLES 1-			
DRAWN JJA		SIZE B	DESCRIPTION KIT: JD SINGLE ROW XP & PRO. GEN II
DATE 8/11/2009		SCALE N/A	DWG NO SB012538
SHEET 1		OF 1	