

Case IH™ Insecticide Drop Tube Instructions – Rear Mount

Part No. SB020746: bolt-on attachment

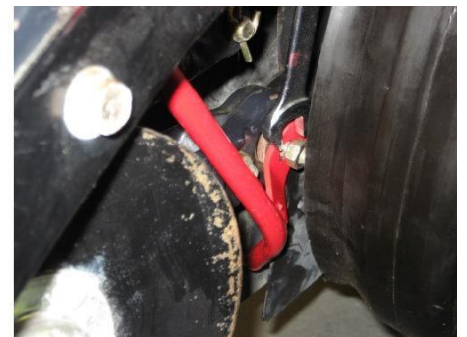
Drop tube SB020746 is used for all SmartBox® system rear mount applications on Case IH™ planters.

This tube will generally require some bending to fit correctly into the tight space that it occupies. Select a row in which you have easy access to, and install each tube. Make any necessary adjustments prior to mounting on each individual row.



Installation Instructions:

1. Remove the nut on the closing disks hinge.
2. Thread the top end of the tube upward through the gap by the press wheel hinge.
3. Insert the bottom end of the tube into the seed shoe, while placing the tubes mounting bracket tab over the hinge bolt (*NOTE: Longer hinge bolts may be required*). Make sure that the bottom end of the tube is inside the seed shoe's skirt to prevent plugging.
4. Place the nut back on the bolt, and tighten to make final adjustment. Remove the nut and repeat this same process for all tubes, before re-mounting them on their respective rows.



General Mounting Instructions: Your SmartBox® system requires that a minimum 45 degree angle be maintained at any point along the product discharge path from the meter outlet to the in-furrow drop tube. The drop tube may need to be bent to adjust. The plastic hose should be cut to length to eliminate any unnecessary slack that could cause a flow restriction. Also, if using a seed firmer the drop tube's foot (if applicable) may need to be cut off or bent up if restricting the firmer's travel.