

SMARTBOX® BRACKET INSTALLATION INSTRUCTIONS

AGCO™ WHITE PLANTERS® 9000 SERIES - FRONT MOUNT

Bracket Part No. SB021555 – *for use with 3 bushel seed boxes*

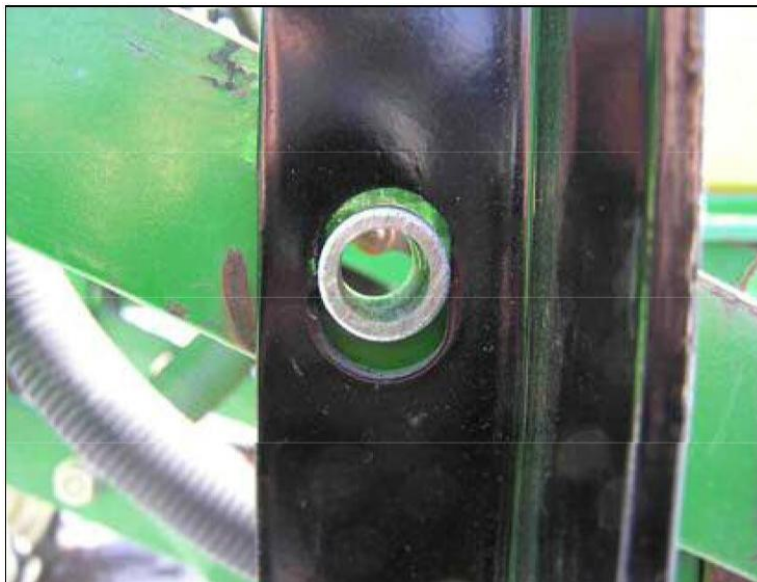
Always use and follow planter manufacturers owner's manual recommended safety guidelines.

Prior to installation, unfold planter and leave the planter row units in the raised position.

See the attached Drawing No. SB021555 & SB021565 and the AMVAC SmartBox System Parts and Operator's Manual for additional installation information.



- A. Start by attaching the two (2) front mount weldments (*item no. 5 & 6*) to the existing holes in the four (4) parallel arms with the bushings, bolts, washers and nuts provided (*item no. 1,2,4,7,8*). Mount the weldments using the holes closest to the row unit.



- B. Attach the angle brace plates (*item no. 4*) to two (2) front mount weldments. (Tighten bolts leaving loose enough for adjustment.)
- C. Align the holes on the top end of the two (2) front mount weldments to the center holes on the front mount adapter plate (*item no. 3*). Once tightened, align the holes on the angle brace plates (*item no. 4*) with the last holes to the rear of the adapter plate (*item no. 3*), as shown on drawing No. SB021565.

Note: The top portion of the bracket is adjustable for better positioning of the dispensing unit.



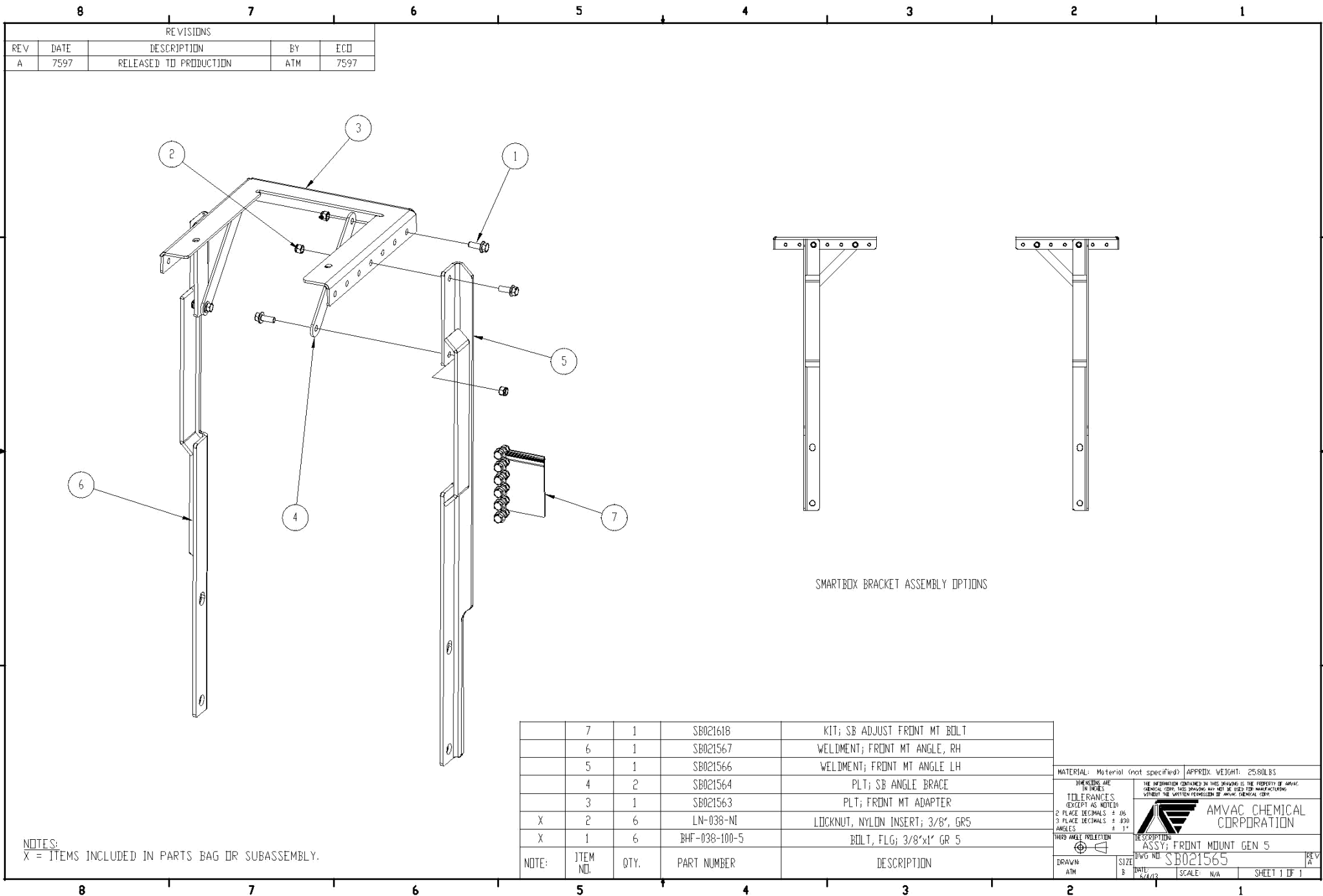
- D. Install the SmartBox[®] cradle to the newly installed bracket. The two formed edges will slide under the rear side of the bracket. Use two bolts, washers and nuts provided in the row unit hardware to secure the cradle to the bracket. Tighten both bolts to secure.

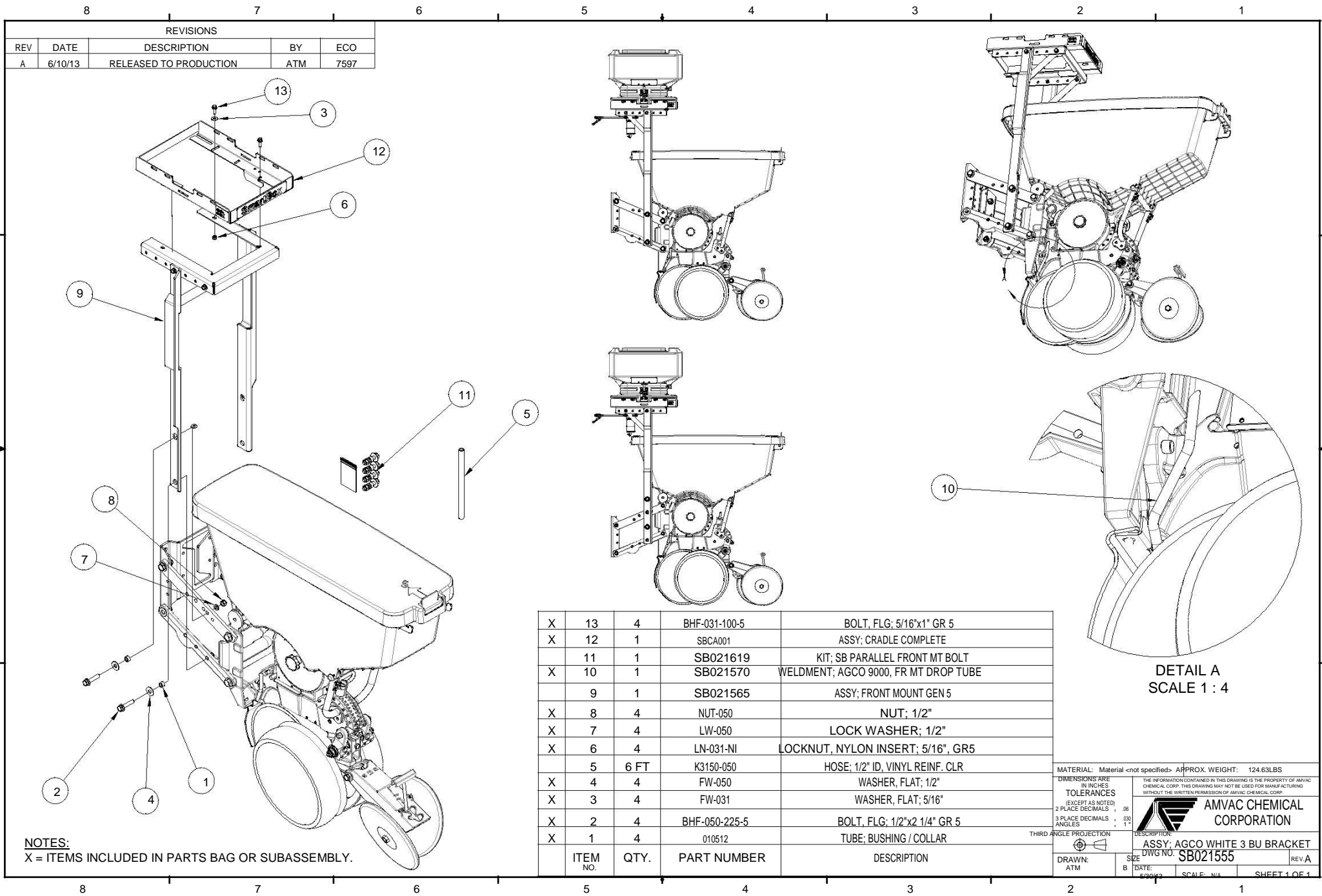


- E. The SmartBox[®] base container (with meter installed on base container) can now be installed.

Note: Meter attachment to the base container for the front mount will need to be secured at a 90° angle so the meter nipple delivering product faces the row it is feeding. See the meter installation instructions for proper installation.







REVISIONS				
REV	DATE	DESCRIPTION	BY	ECO
A	6/10/13	RELEASED TO PRODUCTION	ATM	7597

X	13	4	BHF-031-100-5	BOLT, FLG; 5/16"x1" GR 5
X	12	1	SBCA001	ASSY; CRADLE COMPLETE
	11	1	SB021619	KIT; SB PARALLEL FRONT MT BOLT
X	10	1	SB021570	WELDMENT; AGCO 9000, FR MT DROP TUBE
	9	1	SB021565	ASSY; FRONT MOUNT GEN 5
X	8	4	NUT-050	NUT; 1/2"
X	7	4	LW-050	LOCK WASHER; 1/2"
X	6	4	LN-031-NI	LOCKNUT, NYLON INSERT; 5/16", GR5
	5	6 FT	K3150-050	HOSE; 1/2" ID, VINYL REINF. CLR
X	4	4	FW-050	WASHER, FLAT; 1/2"
X	3	4	FW-031	WASHER, FLAT; 5/16"
X	2	4	BHF-050-225-5	BOLT, FLG; 1/2"x2 1/4" GR 5
X	1	4	010512	TUBE; BUSHING / COLLAR
	ITEM NO.	QTY.	PART NUMBER	DESCRIPTION

NOTES:
X = ITEMS INCLUDED IN PARTS BAG OR SUBASSEMBLY.

MATERIAL: Material <not specified> APPROX. WEIGHT: 124.63LBS

DIMENSIONS ARE IN INCHES

TOLERANCES (EXCEPT AS NOTED)

2 PLACE DECIMALS .06

3 PLACE DECIMALS .030

ANGLES 1°

THIRD ANGLE PROJECTION


DRAWN: ATM

DATE: 6/10/13

SCALE: N/A

SHEET 1 OF 1

THE INFORMATION CONTAINED IN THIS DRAWING IS THE PROPERTY OF AMVAC CHEMICAL CORP. THIS DRAWING MAY NOT BE USED FOR MANUFACTURING WITHOUT THE WRITTEN PERMISSION OF AMVAC CHEMICAL CORP.

 AMVAC CHEMICAL CORPORATION

DESCRIPTION: ASSY: AGCO WHITE 3 BU BRACKET

DWG NO: SB021555

REV: A